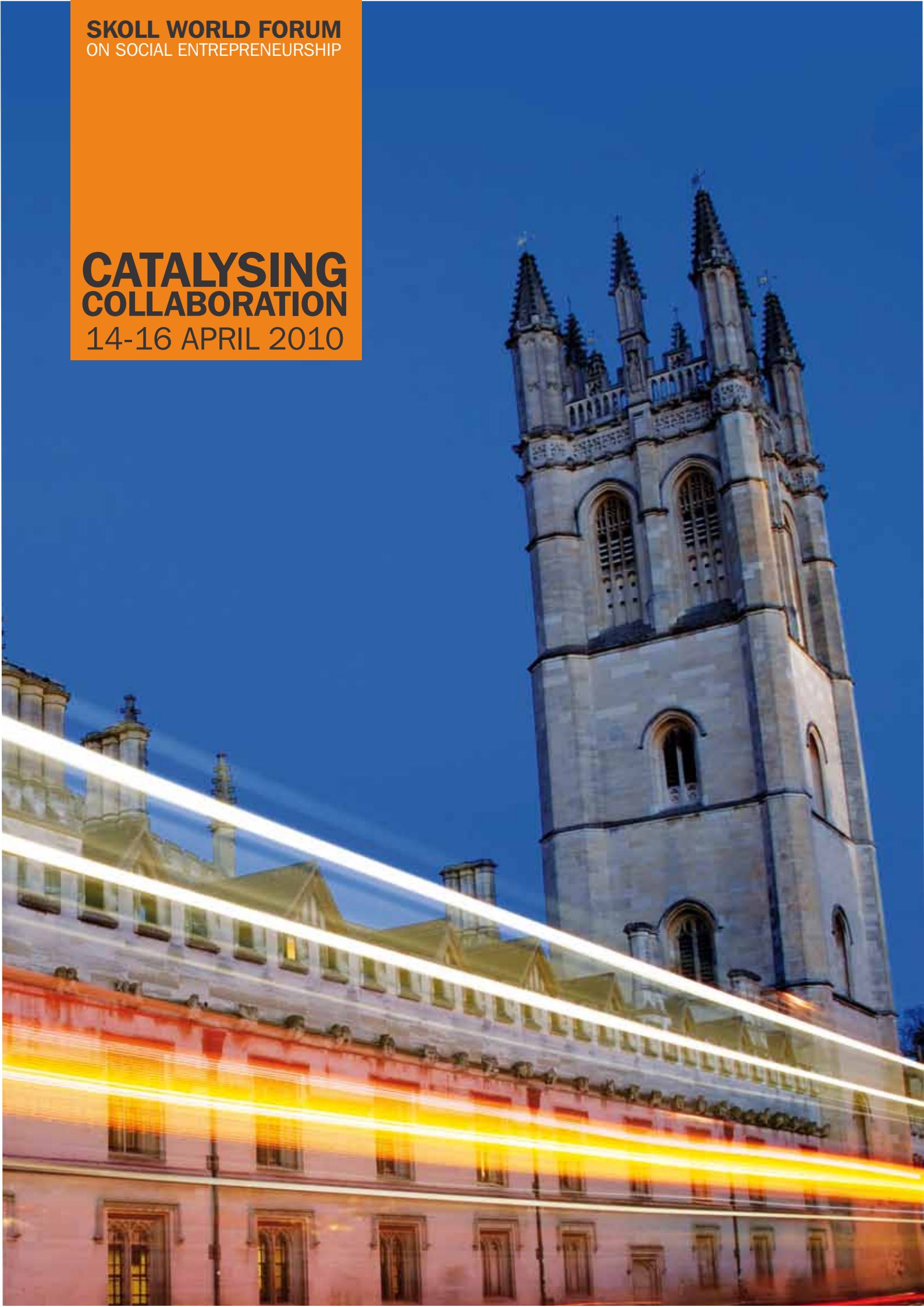


**SKOLL WORLD FORUM**  
ON SOCIAL ENTREPRENEURSHIP

**CATALYSING  
COLLABORATION**  
14-16 APRIL 2010





# WELCOME

BY JEFF SKOLL

NOW IN ITS 7TH YEAR, THE SKOLL WORLD FORUM HAS BECOME THE PREMIER GLOBAL EVENT FOR SOCIAL ENTREPRENEURSHIP.



While the early years revolved around issues of definition and building the field, the Forum has increasingly become a showcase to highlight the large scale impact social entrepreneurs are having on the big challenges facing the planet. Having impact on these issues – climate change, water scarcity, public health, conflict, and more – requires strong coalitions of partners, and the Forum has evolved to reflect that. Leading social entrepreneurs now interact at the Forum with key

government officials, social finance professionals, academics, philanthropic funders and other key ecosystem players who can help them scale their impact.

The Skoll World Forum creates unique opportunities for social entrepreneurs to find the partners and tools they need to drive their impact forward. It's about helping those with the best ideas and most effective organisations accelerate their impact. At the Forum, every delegate counts. Every one of you has something to contribute to help catalyse solutions to the big challenges we face. Welcome to Oxford!

**Jeff Skoll, Founder & Chairman,  
Skoll Foundation, Participant Media, and Skoll Global Threats Fund**

## IN THIS PROGRAMME

BACKGROUND	4
THEME 2010	5
YOUR FORUM	6
NETWORKING	7
NEED TO KNOW	8
MAPS	8
SOCIAL MEDIA	10
FILM SCREENINGS	11
WEDNESDAY	12
OPENING PLENARY	13
THURSDAY	14
AWARDS EVENING	20
FRIDAY	22
CLOSING PLENARY	26
SPEAKER BIOGRAPHIES	28
DELEGATE DETAILS	58
THANK YOU	69
PLAN YOUR FORUM	70

# BACKGROUND

## WHO WE ARE

### SKOLL WORLD FORUM ON SOCIAL ENTREPRENEURSHIP

The Skoll World Forum on Social Entrepreneurship accelerates the impact of the world's leading social entrepreneurs by uniting them with essential partners in the social, academic, finance, corporate and policy sectors in pursuit of learning, leverage and large scale social change. The Forum is a collaborative undertaking between the Skoll Foundation and the Skoll Centre for Social Entrepreneurship at the Saïd Business School, University of Oxford. Both organisations share a commitment to supporting social entrepreneurs who are tackling the world's most pressing problems.

#### SKOLL FOUNDATION Palo Alto, California, USA



Sally Osberg, President & CEO

The Skoll Foundation was created in 1999 by eBay's first president, Jeff Skoll, to promote his vision of a more peaceful and prosperous world. The Foundation's mission is to drive large-scale change by investing in, connecting and celebrating social entrepreneurs and other innovators dedicated to solving the world's most pressing problems. The Skoll Award for Social Entrepreneurship is the Foundation's flagship programme, celebrated annually at The Skoll World Forum.

The Skoll Foundation connects social entrepreneurs and others in the field via an online community at [www.socialedge.org](http://www.socialedge.org) and through the annual Skoll World Forum. The Foundation also celebrates social entrepreneurs by telling their stories through partnerships with organisations like the Sundance Institute and PBS NewsHour, with the goal of promoting broad public awareness of social entrepreneurship.

[www.skollfoundation.org](http://www.skollfoundation.org)



#### SKOLL CENTRE FOR SOCIAL ENTREPRENEURSHIP Oxford, UK



Pamela Hartigan, Director

The Skoll Centre for Social Entrepreneurship at the University of Oxford's Saïd Business School is a leading academic institution for the advancement of social entrepreneurship worldwide. The Skoll Centre fosters innovative social transformation through world-class education, knowledge creation, and collaboration.

The Centre invests in three key areas:

- developing talent of future business leaders and social innovators
- advancing scholarship, research and teaching of social entrepreneurship
- creating a global hub for key actors of social impact.

It was founded in 2003 with a \$7.5 million investment by the Skoll Foundation, the largest funding ever received by a business school for an international programme in social entrepreneurship.

[www.sbs.ox.ac.uk/skoll](http://www.sbs.ox.ac.uk/skoll)



University of Oxford  
**Skoll Centre for Social  
Entrepreneurship**  
Saïd Business School

# THEME 2010: CATALYSING COLLABORATION FOR LARGE SCALE CHANGE

The complexity and scale of today's 'wicked problems' demand we raise our game. Social entrepreneurs with innovative solutions to critical issues cannot achieve impact at scale without creative alliances with public, private and development sector actors. With shifts in policy and funding environments and a critical mass of social entrepreneurs working globally, the imperative to collaborate is now.

This year's Forum will engage the world's most influential social entrepreneurs, social investors, and thought leaders from all sectors in critical discussions, debates and work-sessions designed to create partnerships, networks, knowledge and collaborative pathways between the social, policy, academic and private sectors.

## PARTNERS

The Skoll World Forum is proud to partner with institutions that support social entrepreneurship worldwide.

**McKinsey & Company**

the official knowledge partner  
of the Skoll World Forum



# YOUR FORUM

GET THE MOST OUT OF IT

From themed sessions, to in-depth analysis of issues, to social finance, to best practices in organisational design, the Forum provides an atmosphere of learning, leverage and collaboration. Delegates can select from a range of formal sessions or generate their own round table discussions through our new Connect and Collaborate open space discussions.

## **DON'T MISS A THING**

All Forum sessions will be video recorded or audio taped. These will be available alongside interviews and daily highlights of the Forum at [www.skollworldforum.com](http://www.skollworldforum.com).

## SESSIONS

### Collaboration in Action

From real-world case studies to cross sector discussions with public, private and social sector actors, these sessions explore the challenges, barriers to, and promises of collaborative entrepreneurship.

### Critical Issues

Global thought leaders, prominent social entrepreneurs and academics share insights and engage audiences in solution-oriented conversations. Whatever your primary issue area, join these conversations for cross-cutting insights into the issues that affect us all.

### Enterprise Accelerator

Experts and seasoned social entrepreneurs provide strategic and practical insights on organisational challenges faced by social ventures. From impact assessment to leadership and social media strategy, these sessions provide actionable takeaways designed to fuel social entrepreneurs and their organisations.

### Innovative Finance

Innovations in social finance are providing new avenues for funding social entrepreneurial ventures. Key actors in this burgeoning sector share latest developments with the aim of demystifying hype and clarifying opportunities.

## EVENTS

### First Connections

An introductory session of small group discussions designed to help you make lasting connections that continue well beyond the Forum. Share experience, successes and greatest challenges.

### Welcome Reception

An informal opportunity to share refreshments and start networking with fellow delegates.

### Delegate Dinners

A uniquely Oxonian evening of dining and discussion at one of four University of Oxford Colleges - Balliol College, Exeter College, Wadham College and New College. The invitation in your badge pack will indicate the location of your college dinner. Invitations will be checked on entry and badges must be worn.

### Skoll Awards Reception

Join fellow delegates and Skoll Awardees at the University of Oxford Examination Schools.

## NETWORKING

### Connect and Collaborate

With the goal of fostering collaboration, we encourage delegates to organise table top conversations around topics of their choice. The conversations run in parallel with Forum sessions. Problem-solve challenges, share best practices, and network with delegates with like interests, concerns, or experience. With a maximum of ten delegates per table, and an hour and a half per session, there is opportunity for rigorous discussion.

**Propose a topic.** Sign up with your discussion topic or join an existing group in Seminar A – first come, first served.

**When are discussions taking place?** Topics are listed in Seminar Room A and will be announced via Twitter (@skollworldforum), at <http://skoll.pathable.com> and on monitors in the Entrance Hall.

### Networking Lounge

Located in the centre courtyard at Saïd Business School and open throughout the day, the networking lounge is a place to connect with fellow delegates.

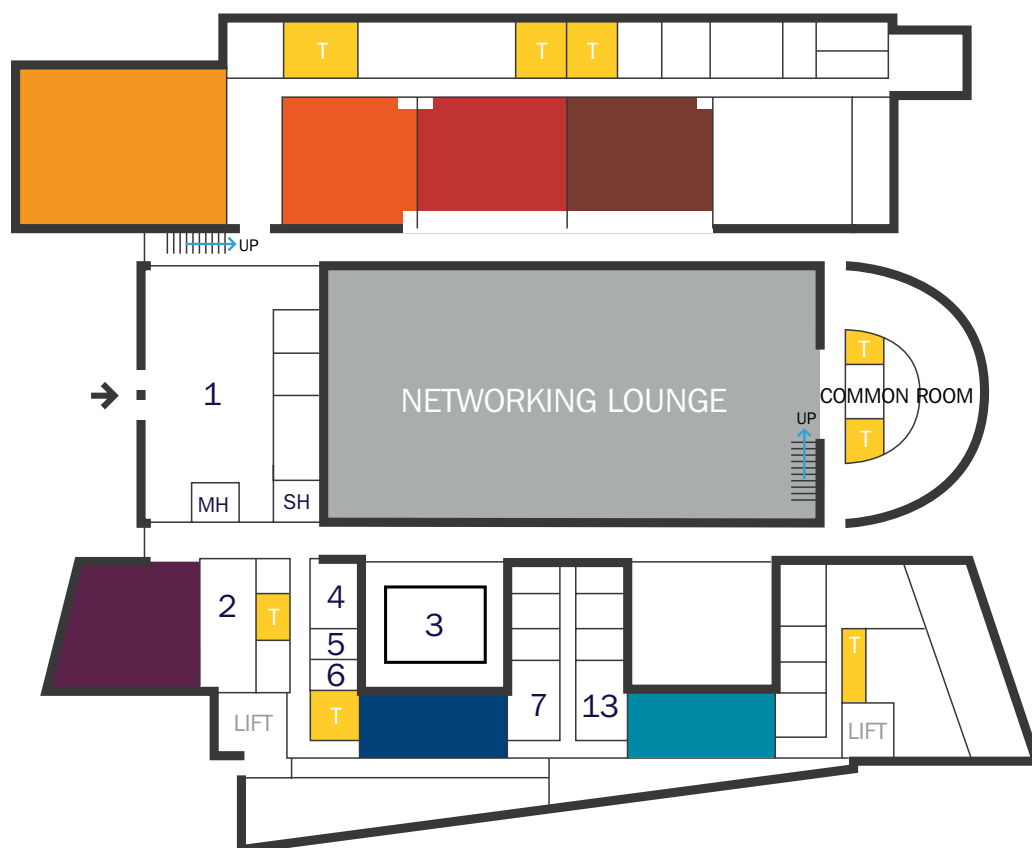
### Common Room

Open all day providing a place for delegates to meet, chat and eat.

### Seminar Room 13

Available as a meeting space, located between Seminar A & B.

## SAID BUSINESS SCHOOL



### WHERE IS EVERYTHING?

See map above.

<span style="color: orange;">■</span> Nelson Mandela Lecture Theatre	<b>1</b>	Entrance hall
<span style="color: red;">■</span> Rhodes Trust Lecture Theatre	<b>2</b>	Luggage room
<span style="color: darkred;">■</span> Edmond Safra Lecture Theatre	<b>3</b>	Cloakroom
<span style="color: brown;">■</span> Lecture Theatre 4	<b>4</b>	Andrew Cormack Seminar Room
<span style="color: purple;">■</span> Reception Room	<b>5</b>	Speaker green room
<span style="color: blue;">■</span> Seminar Room A	<b>6</b>	Media room
<span style="color: teal;">■</span> Seminar Room B	<b>7</b>	Computer Room
<span style="color: yellow;">■</span> Toilets	<b>13</b>	Seminar 13
	<b>SH</b>	Skoll Helpdesk
	<b>MH</b>	Media helpdesk

### NEED TO KNOW

Skoll World Forum badges are required for all Forum events. Delegate Dinner invites are located in your badge pack.

**Saïd Business School:** Open daily from 0800.

#### Luggage Room and Cloakroom:

Check the daily schedule for opening times.

**Computer Room, Seminar Rooms 7 & 8:** Check the daily

schedule for opening times. Facilities include 21 computers with internet access. There is no printing or technical assistance.

#### Wireless Network:

Connect to SBS-CONF  
Password: SWF2010

**Brown bag lunch** is available in the Entrance Hall. Grab a lunch and go to the Common Room, Networking Lounge, Seminar A & B or Seminar 13 to network.

### Access to Sessions, Sheldonian Theatre and Film Screenings

Forum sessions are on a first come, first served basis. Arrive early to guarantee entry.

Seating at the Sheldonian Theatre for both plenaries and the Skoll Awards Ceremony is general admission. Doors open 45 minutes prior to start. The theatre is a 15 minute walk from Saïd Business School.

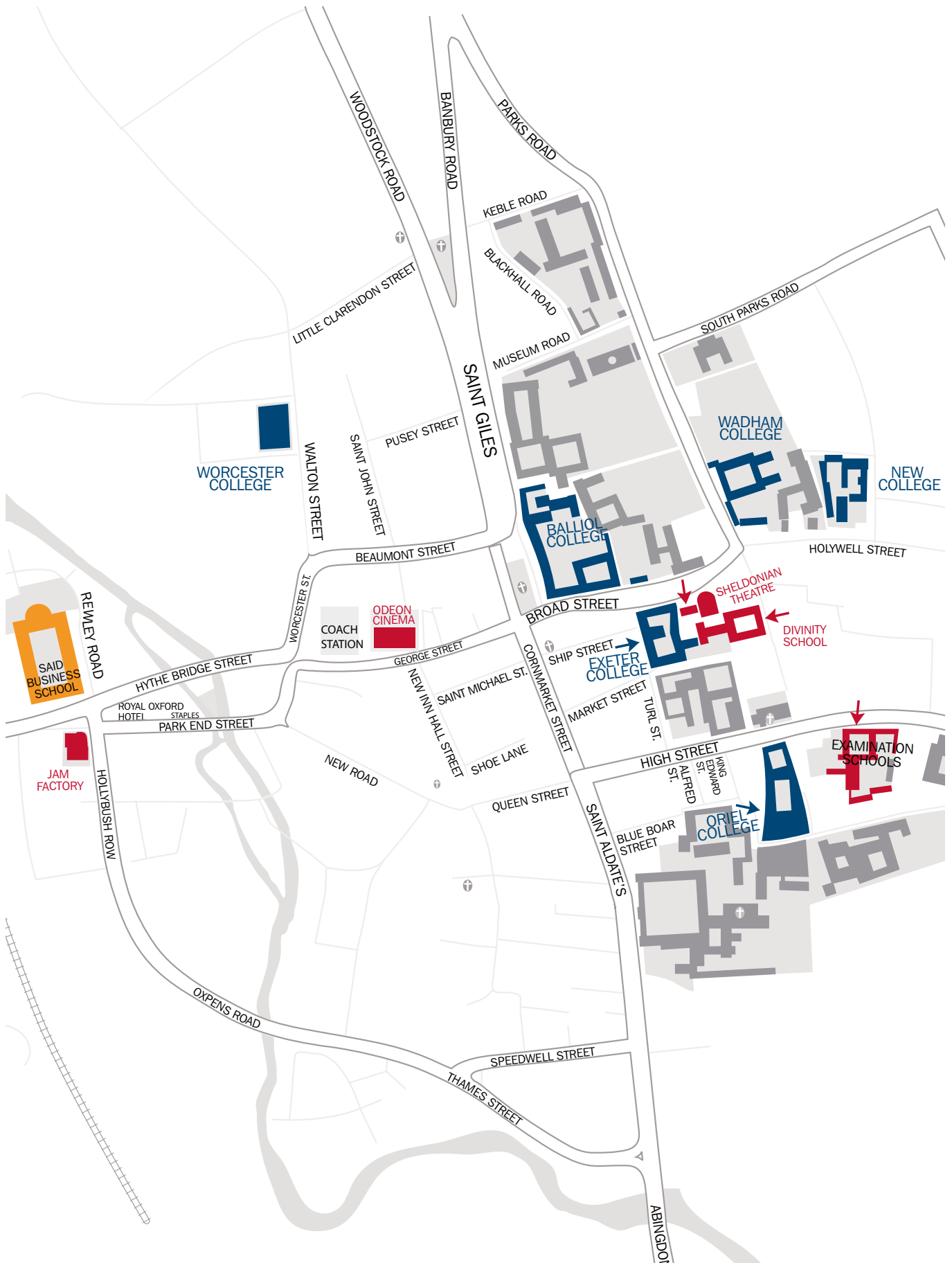
Free private film screenings of *Countdown to Zero* and *Oceans* will be available on a first come, first served basis. Doors open at the Odeon Theatre, George Street, at 2130.

### Open Space Discussion Sign Up

Sign up for Connect and Collaborate – delegate-led table top discussions - in Seminar A. Topics will be also announced via Twitter (@skollworldforum) and on monitors in the Entrance Hall.



# OXFORD CITY CENTRE



# SKOLL WORLD FORUM BLOGGERS

Explore perspectives and insights from the Forum, updated daily from our dedicated team of bloggers.



**Grace Augustine** is an MSc in Management Research candidate at Oxford's Saïd Business School who researches approaches to climate change. Read her blogs at [www.NextBillion.net](http://www.NextBillion.net) and [www.ssireview.org](http://www.ssireview.org).



**Peter Deitz** is a blogger, microphilanthropy consultant, and the founder of Social Actions. Read his blog at <http://peterdeitz.com> and <http://twitter.com/peterdeitz>.



**Kjerstin Erickson** is the Founder and Executive Director of FORGE, a leading organisation in the field of African peace building, and a voice for ethical evolution in the social change space. Read her blog at [www.socialedge.org/blogs/forging-ahead](http://www.socialedge.org/blogs/forging-ahead)



**Leila Janah** is Founder and CEO of Samasource, a non-profit that connects over 600 people to dignified work. She serves on the boards of TechSoup Global, SourceMap, and the Social Enterprise Institute. Read her blog at [www.leilac.com](http://www.leilac.com)



**Nathaniel Whittemore** is the founder of Assetmap, a web platform that helps groups unlock their social capital, and lead social entrepreneurship blogger on Change.org. Read his blog at <http://socialentrepreneurship.change.org>.



**Terence Yuen** lectures in public administration and non-profit studies in the City University of Hong Kong. His blog posts can be found at <http://ngohk.blogspot.com/>

## SOCIAL MEDIA

With Social Media there are a variety of ways to contribute to, share, explore and discuss the ideas being exposed at this year's Forum.

### Online Community

Catch all the social reporting from the Forum.

**[www.skollworldforum.com](http://www.skollworldforum.com)**

[www.socialedge.org](http://www.socialedge.org)

Social Edge is a programme of the Skoll Foundation and is the global online community where social entrepreneurs and other practitioners within the social benefit sector connect to network, learn, inspire and share resources.

### Follow on Twitter

@SkollWorldForum

for logistics updates, schedule reminders and highlights.

@SkollFoundation

for Foundation insights and updates on Skoll Social Entrepreneurs.

@SkollCentre

for updates from the Skoll Centre.

@SocialEdge

for colourful commentary and community voices.

### Contribute



'swf10'

Use this tag when you upload photos, films and blogs.

'#swf10'

Use this hashtag on Twitter.

### Online Networking

**<http://skoll.pathable.com>**

Connect with other delegates in this private networking and discussion space for attendees. Add links from your social media profiles to your delegate networking profile. Highlight your own blog and post articles.

**COUNTDOWN  
TO ZERO  
OCEANS**

**COUNTDOWN  
TO ZERO  
OCEANS**

## PRIVATE FILM SCREENINGS

Delegates of the Skoll World Forum are invited to exclusive private screenings of two new films from Participant Media. Participant believes that a good story well told can truly make a difference in how one sees the world. Whether it is a feature film, documentary or other form of media, Participant exists to tell compelling, entertaining stories that also create awareness of the real issues that shape our lives. Please note that seating will be limited and provided on a first come, first served basis. Badges must be shown on entry.



### **COUNTDOWN TO ZERO**

Director: Lucy Walker

A fascinating and frightening exploration of the dangers of nuclear weapons, exposing a variety of present day threats and featuring insights from a host of international experts and world leaders who

advocate total global disarmament.

Odeon Cinema, George Street

Wednesday, 14 April, 2200 – 2330 (Doors 2130)

Free Admission, Limited Seating



### **OCEANS**

Directors: Jacques Perrin,  
Jacques Cluzaud

Nearly three-quarters of the Earth's surface is covered by water and *Oceans* boldly chronicles the mysteries that lie beneath. Directors Jacques Perrin and Jacques Cluzaud dive deep into the very waters that sustain all of mankind - exploring the playful splendour and the harsh reality of the weird and wonderful creatures that live within. Featuring spectacular never-before-seen imagery captured by the latest underwater technologies, *Oceans* offers an unprecedented look beneath the sea in a powerful yet enchanting motion picture.

Odeon Cinema, George Street

Thursday, 15 April, 2200 – 2330 (Doors 2130)

Free Admission, Limited Seating

# WEDNESDAY

## 0900-2330



### FIRST CONNECTIONS

1400-1500

SEMINAR ROOMS A & B

Kick off your Forum experience with this fast-paced facilitated networking session designed to help you meet new faces and make lasting connections. Participants will engage in a series of small-group discussions to share their experience, successes, and greatest challenges. This is an immediate opportunity to start building relationships that will last well beyond the Forum.



### WELCOME RECEPTION

1500-1600

ENTRANCE HALL

Come to the Welcome Reception for refreshments and start networking with fellow delegates.



### DELEGATE DINNER

1900-2130

BALLIOL COLLEGE; EXETER COLLEGE; WADHAM COLLEGE; NEW COLLEGE

A uniquely Oxonian evening of dining and discussion at one of four University of Oxford Colleges; Balliol, Exeter, Wadham and New College. The invitation in your badge pack will indicate the location of your college dinner. Invitations will be checked on entry and badges must be worn.



### PRIVATE FILM SCREENING: COUNTDOWN TO ZERO

2200-2330

ODEON THEATRE 63 GEORGE STREET

Free Admission

Limited Seating

Doors open at 2130

## NEED TO KNOW

REGISTRATION  
0900-1600 | RECEPTION ROOM

Luggage Room: 0815 - 2130

Cloakroom: 0815 - 1730

Computer Room: 0815 - 1730

See page 28 for speaker profiles

See pages 8/9 for maps

# OPENING PLENARY

1700-1830



SHELDONIAN THEATRE | 15 MINUTE WALK | DOORS OPEN AT 1615 | SEATING IS GENERAL ADMISSION

## MUSICAL PERFORMANCE

Vusi Mahlasela, South African Singer-Songwriter and Poet Activist

## WELCOME

Colin Mayer, Peter Moores Dean, Professor of Management Studies, Saïd Business School

Jeff Skoll, Founder & Chairman, Skoll Foundation, Participant Media, and Skoll Global Threats Fund

## THE IMPERATIVE TO COOPERATE:

### A call for peace

Lakhdar Brahimi, Veteran United Nations Envoy and Advisor, Former Foreign Minister to Algeria

## GOVERNANCE, TRANSPARENCY

### AND COLLABORATION: Beneficiaries in the balance

Moderator: John Ydstie, Economic Correspondent, National Public Radio, USA

Ann Cotton, Executive Director, Camfed International

Diana Good and Lance Croffoot-Suede, Partners, Linklaters LLP

Dr. Felix Phiri, Director of Planning and Information, Ministry of Education, Zambia

Faith Nkala, Deputy Executive Director, Camfed Zimbabwe

## CATALYSING COLLABORATION:

### Our humanity at stake

Paul Farmer, Co-Founder, Partners In Health

## CLOSING REMARKS

Pamela Hartigan, Director, Skoll Centre for Social Entrepreneurship

# THURSDAY

## 0900-1030

### COLLABORATION IN ACTION

#### STRUCTURING COLLABORATION: Mergers, partnerships and new business models

NELSON MANDELA LECTURE THEATRE

To achieve impact at scale, social entrepreneurs are inventing new ways to collaborate with a diversified range of partners. This session will share three successful approaches that have led to sustainable scale: merging two social ventures as a means for collaboration and growth; partnering with government, private sector, banks and end-users, and shaping sustainable development practices through new business models such as spin-offs structured for growth and leverage.

#### MODERATOR

**David Bornstein**,  
Chief Storyteller, Dowser Media

#### SPEAKERS

**Sue Riddlestone**,  
Executive Director & Co-Founder,  
BioRegional Development Group

**Andrea Coleman**,  
CEO, Riders for Health

**Gary White**,  
Executive Director, Water.org

### CRITICAL ISSUE

#### PEACE BUILDING AND CONFLICT: The role for social entrepreneurs

EDMOND SAFRA LECTURE THEATRE

Ending conflict and building peace requires both political leadership at the top and energy and commitment from the bottom. Social entrepreneurs working in conflict zones and post-conflict societies often seek support for peace at the grass roots. What does it take to be effective in this setting? How do projects survive and can they be scaled up? How do you find partners and allies? This session focuses on locally-led solutions to conflict and the role that social entrepreneurs are playing in some of the most divided societies on earth.

#### MODERATOR

**Mabel Van Oranje**,  
CEO, The Elders

#### SPEAKERS

**Gidon Bromberg**,  
Israeli Director, EcoPeace

**Lakhdar Brahimi**, Veteran United Nations Envoy and Advisor, Former Foreign Minister to Algeria

**Scott Gilmore**, Executive Director, Peace Dividend Trust

**Isabella Matambanadzo**,  
Chief Executive Officer,  
The Zimbabwe Trust

### INNOVATIVE FINANCE

#### BEYOND THE SINGLE BOTTOM LINE: Pioneers in blended value

RHODES TRUST LECTURE THEATRE

Mainstream companies are moving beyond gifts to charities and are incorporating social entrepreneurship into their business models. Recognising that social and environmental, as well as financial returns can have direct and positive impacts on a company's branding, mainstream markets, and employee moral, blended value is replacing the single bottom line approach. This session engages pioneers in blended value practice and examines what it takes from leadership and organisational culture to managing shareholder expectations to truly move beyond the single bottom line.

#### MODERATOR

**Byron Auguste**, Director,  
Social Sector Office,  
McKinsey & Company Inc.

#### SPEAKERS

**Deborah Holmes**,  
Global Director, Corporate  
Responsibility, Ernst & Young LLP

**Alberto Vollmer**, Chairman  
& CEO, CA Ron Santa Teresa

**Mike Barry**, Head of Sustainable  
Business, Marks & Spencer

**Jeff Mendelsohn**, Founder and  
CEO, New Leaf Paper

## NEED TO KNOW

REGISTRATION  
0800 - 1730 | ENTRANCE HALL

Luggage Room: 0815 - 1730

Cloakroom: 0815 - 1730

Computer Room: 0815 - 1730

## ENTERPRISE ACCELERATOR

## THE NEUROSCIENCE OF CHANGE: Understanding the brain, influencing behaviour

LECTURE THEATRE 4

Getting people to care is one of the greatest challenges facing social entrepreneurs. Whether inspiring consumers toward fair trade, persuading corporate leaders to care about labour practices, or empowering women in a rural village – the challenge to influence behaviour is daunting. This session will explore the neuroscience behind this complex process. From the circuitry of our brains to the emotional responses that direct behaviour, esteemed neuroscientists and behaviourists will share theoretical and practical knowledge that can help social entrepreneurs more effectively navigate this challenge.

**MODERATOR**

**Philip Campbell**,  
Editor-in-Chief, Nature

**SPEAKERS**

**Peter Dayan**, Professor,  
University College London

**Read Montague**, Professor,  
Baylor College of Medicine

**Chris Frith**, Emeritus Professor  
of Neuropsychology, University  
College London

## ENTERPRISE ACCELERATOR

## NAVIGATING THE FUTURE: Scenario planning for social entrepreneurs

RECEPTION ROOM

How can social entrepreneurs build effective strategies in the midst of social, technical, economic, political and environmental externalities? Scenario planning is a powerful tool used by governments and Fortune 500 corporations alike in building focused yet responsive strategies to guide their organisations. Join scenarios expert Dr. Rafael Ramirez for this master class on a process that combines known facts about the future with alternative plausible pathways. Leave the session armed with methodologies and practical next steps to improve your organisation's longer-range vision.

**SPEAKERS**

**Rafael Ramírez**, James Martin  
Senior Research Fellow in  
Futures, University of Oxford



## CONNECT AND COLLABORATE

SEMINAR ROOM A &amp; B

Table top conversations run in parallel with Forum sessions. Problem-solve challenges, share best practices, and network. Sign up with your discussion topic in Seminar A or join an existing group – first come, first served.



## ONLINE NETWORKING

[HTTP://SKOLL.PATHABLE.COM](http://skoll.pathable.com)

Want to carry on the conversation after a session? Participate in networking discussions around session themes and other topics you wish to pursue.



## BREAK

1030-1100

Visit the Entrance Hall and Networking Lounge for refreshments and chat or enjoy some fresh air in the amphitheatre. The Common Room is open all day for delegates to meet and eat.

# THURSDAY

## 1100-1230

### INNOVATIVE FINANCE

#### SOCIAL GOOD WITH MARKET RETURNS?

Investors and entrepreneurs are having it both ways

NELSON MANDELA LECTURE THEATRE

The idea of using profit-seeking investment to generate social and environmental good is moving from a periphery of activist investors to the core of mainstream financial institutions. This emerging class of investors reaches far beyond the 'do no harm' world of socially responsible investing to actively place capital toward solutions that philanthropy alone cannot reach. This panel includes investors on the leading edge of the wave that is simultaneously creating large-scale social, environmental, and financial returns.

#### MODERATOR

**Herta von Stiegel**,  
Executive Chairman, Ariya Capital

#### SPEAKERS

**Nick O'Donohoe**, Global Head of Research, JP Morgan

**David Chen**, Principal,  
Equilibrium Capital Group

**John McCall MacBain**,  
Founder & Director, McCall  
MacBain Foundation

### CRITICAL ISSUES

#### WATER SCARCITY AND THE HUMAN RIGHT TO WATER

EDMOND SAFRA LECTURE THEATRE

In recent years the right to water has grown in importance as a moral, religious, legal and practical question and as a tool for tackling water scarcity. Join thought leaders, academics, activists and social entrepreneurs for a revealing discussion about the barriers and opportunities presented by the human rights agenda. We expect vigorous discussion around issues such as charging the poor for water, privatisation, local control of water management, and the rights and duties of government, farmers, and the urban poor in water management.

#### MODERATOR

**Fred de Sam Lazaro**,  
Correspondent & Director,  
PBS NewsHour

#### SPEAKERS

**Peter Gleick**, President,  
Pacific Institute

**Gary White**, Executive Director,  
Water.org

**Gidon Bromberg**, Israeli Director,  
EcoPeace

### COLLABORATION IN ACTION

#### HOW TO BUILD A 'FIERCE, WILD UNSTOPPABLE MOVEMENT AND COMMUNITY'

RHODES TRUST LECTURE THEATRE

With an audacious mission, slim staff and \$70 million raised to date, V-Day has built a powerful, global movement to end violence against women using an innovative empowerment philanthropy model. Working in 130 countries, V-Day is now launching an unprecedented collaborative initiative in the Democratic Republic of Congo: the City of Joy. Whatever your venture, benefit from a candid nuts and bolts conversation with the founder, renowned author and playwright Eve Ensler. Draw critical lessons from the challenges and successes of this real-world case study in true collaborative impact.

#### MODERATOR

**Pat Mitchell**, President & CEO,  
The Paley Center For Media

#### SPEAKERS

**Eve Ensler**,  
Playwright & Founder, V-Day

**Agnes Pareyio**,  
Project Coordinator,  
Tasaru Ntomonok Initiative

## NEED TO KNOW

See page 28 for speaker profiles

See pages 8/9 for maps



## COLLABORATION IN ACTION

## PARTNERING WITH ACADEMIA: Balancing tradition and transformational change

LECTURE THEATRE 4

While educational institutions have been historically slow to respond to societal change, a new generation of educational innovators recognises the critical intersection between academia and practitioners working for social change on the ground. How are universities responding to global challenges and catalysing efforts to advance knowledge, thought leadership, and talent in an uncertain world? This session will explore the synergies, disconnects, and future opportunities for collaboration between academic actors and social entrepreneurs.

**MODERATOR**

**Ian Goldin**, Director,  
James Martin 21st Century  
School

**SPEAKERS**

**Helmy Abouleish**,  
Managing Director, SEKEM  
Group

**James Phills**, Professor,  
Center for Social Innovation,  
Stanford University

**Laura Parkin**, CEO, National  
Entrepreneurship Network

## COLLABORATION IN ACTION

## THE POWER OF MANY: Collaborative impact and measurement

RECEPTION ROOM

With growing ambition yet shrinking resources, funders are increasingly interested in the collaborative impact of multiple grantees working together around a common goal. This cluster approach brings challenges for funders who want to structure and measure these initiatives, and opportunities for social entrepreneurs seeking to engage with this emerging phenomenon. This interactive session explores both sides of the equation, bringing perspectives of funders, consultants and social entrepreneurs at the forefront of this trend towards collaborative impact.

**MODERATOR**

**Lakshmi Karan**, Director,  
Impact Assessment & Learning,  
Skoll Foundation

**SPEAKERS**

**Karabi Acharya**, Change Leader,  
Ashoka

**Laura Callanan**, Consultant,  
McKinsey & Company

**Federico Bellone**,  
Amazon Program Manager,  
Fundación AVINA

**Ina Epkenhans**, Director,  
PHINEO



## CONNECT AND COLLABORATE

SEMINAR ROOM A &amp; B

Table top conversations run in parallel with Forum sessions. Problem-solve challenges, share best practices, and network. Sign up with your discussion topic in Seminar A or join an existing group – first come, first served.



## NETWORKING LOUNGE

CENTRAL COURTYARD

Visit the Networking Lounge, located in the central courtyard of the Saïd Business School. It is a hub for introductions, conversation and the exchanging of ideas.



## LUNCH

1230 - 1400

Picnic lunch bags will be provided in the Entrance Hall.

# THURSDAY

## 1400-1530

### COLLABORATION IN ACTION

#### AID AGENCIES AND SOCIAL ENTREPRENEURS: Natural allies, new bridges

NELSON MANDELA LECTURE THEATRE

This session brings together senior staff working in development agencies that have engaged, or attempted to engage, directly with social entrepreneurs working in emerging markets. To what degree have these respective agencies facilitated the work of innovative social change agents working directly with the poor? What can be done to enhance the impact of these potentially powerful partnerships? The session will draw upon entrepreneurs in the audience who have engaged with international aid agencies.

#### MODERATOR

**Elizabeth Littlefield**,  
Director, CGAP

#### SPEAKERS

**Jörg Hartmann**,  
Executive Director, GTZ

**Ambassador Elizabeth Frawley Bagley**, Special Representative for Global Partnerships, Office of Secretary of State

**Minouche Shafik**,  
Permanent Secretary, DFID

**Rachel Kyte**, Vice President,  
International Finance Corporation

### CRITICAL ISSUES

#### OCEANS IN PERIL: Catalysing international collaboration

EDMOND SAFRA LECTURE THEATRE

The oceans produce more than seventy percent of our oxygen, dominate the world's weather system, and support the livelihoods of 500 million people worldwide. Yet today they are in great peril - overfished, polluted, and damaged by the absorption of ever-increasing amounts of carbon dioxide. What must be done if we are to reverse the destruction of this vital resource? Join in this interactive, solution-oriented discussion with some of the world's leading activists, academics and social entrepreneurs working at the intersection of this critical issue.

#### MODERATOR

**Jon Bowermaster**, Writer & Filmmaker, Oceans 8 Films

#### SPEAKERS

**Rupert Howes**, CEO, Marine Stewardship Council

**Jake Eberts**, Independent Producer

**Callum Roberts**, Professor, University of York

### ENTERPRISE ACCELERATOR

#### COMPELLING ACTION: Social change media in the age of information overload

RHODES TRUST LECTURE THEATRE

Media can move mountains but few know how to deliver a story that is heard above the din and can jolt an audience into action. This interactive session starts with examples from those whose stories have successfully galvanized broad audiences in support of their efforts and moves quickly into a fast-paced sharing of experience and recommendations from the audience. This session will synthesize themes and draw on the extensive expertise in the room so that everyone walks away with tangible strategies for compelling action!

#### MODERATOR

**Jess Search**, CEO,  
Channel 4 BRITDOC Foundation

#### SPEAKERS

**Premal Shah**, President, Kiva

**Jim Berk**, CEO, Participant Media

**Cara Mertes**, Director,  
Sundance Institute Documentary Film Program

**Alvin Hall**, Broadcaster, Author, & President, Cooperhall Press Inc.

## NEED TO KNOW

See page 28 for speaker profiles

See pages 8/9 for maps

## COLLABORATION IN ACTION

## WHEN DISASTER STRIKES: Social entrepreneurs managing through crisis

LECTURE THEATRE 4

Social entrepreneurs tackle difficult problems in challenging environments, often working in places with weak infrastructure, fragile government and limited resources. When disaster hits, such as the earthquake in Haiti, social entrepreneurs often have the networks and processes in place to be effective early responders. This requires meeting the dual challenge of managing their own operations in a time of stress and coordinating relief efforts. In this session, social entrepreneurs who have managed through crisis will talk about what it takes to be effective.

**MODERATOR**

**Ray Suarez**, Senior Correspondent, PBS Newshour

**SPEAKERS**

**Paul Farmer**, Co-Founder, Partners In Health

**Jenny Bowen**, Founder & Executive Director, Half the Sky Foundation

**Craig Kielburger**, Chair & Founder, Free The Children

## ENTERPRISE ACCELERATOR

## LOCAL TALENT ON A GLOBAL SCALE: HR strategies for sustainability

RECEPTION ROOM

This interactive session looks at cultivating talent throughout an organisation for scale and impact, whether you are working to convert local beneficiaries into operational staff, building a team to scale your organisation at a global level, or strategising around succession planning. Draw on the experience of top-level social entrepreneurs, consumers-turned-managers, and sector consultants to help you problem solve your toughest HR challenge.

**MODERATOR**

**Jill Finlayson**, Web Marketing Manager, Social Edge, Skoll Foundation

**SPEAKERS**

**Mai Siriphongphanh**, Chief People Officer & COO, Digital Divide Data

**Vive Mgudlwa**, Site Coordinator, mothers2mothers

**Sam Goldman**, CEO, D.light Design

**Sébastien Marot**, International Coordinator, Friends-International

**Pari Jhaveri**, Executive Director, Third Sector Partners

**Yvette Alberdingk Thijm**, Executive Director, Witness



## CONNECT AND COLLABORATE

SEMINAR ROOM A &amp; B

Table top conversations run in parallel with Forum sessions. Problem-solve challenges, share best practices, and network. Sign up with your discussion topic in Seminar A or join an existing group – first come, first served.



## DON'T MISS A THING

[WWW.SKOLLWORLDFORUM.COM](http://WWW.SKOLLWORLDFORUM.COM)

For video coverage of key sessions, podcasts, photographs and video diaries. You can also follow our bloggers. See page 10 for more information on social reporting.



## SKOLL AWARDS

SHELDONIAN THEATRE

THURSDAY 1730-1900

Hear the stories of the Skoll Awardees. A wonderful evening followed by a reception in the University Examination Schools.

# THURSDAY

**1730-1900**

## SKOLL AWARDS

FOR SOCIAL ENTREPRENEURSHIP

Image: Br. Lawrence Levy, O.P.

SHELDONIAN THEATRE | DOORS OPEN AT 1645 | SEATING IS GENERAL ADMISSION

### CEREMONY 1730-1900

The Skoll Foundation invites you to attend the Skoll Awards for Social Entrepreneurship to honour the 2010 Awardees and to celebrate all those who are working to create a peaceful, prosperous, and sustainable world. Please join Jeff Skoll, Founder and Chairman, and Sally Osberg, President and CEO, for a special evening of inspiration and storytelling.

### FEATURING

#### REMARKS BY:

Paul Hawken, CEO, OneSun Solar

Sally Osberg, President and CEO, Skoll Foundation

#### MUSICAL PERFORMANCE BY:

Jimmy and Donnie Demers

#### PREMIERE OF:

Uncommon Heroes short films about: TransFair, Afghan Institute of Learning, GramVikas.

### 2010 AWARDEES



MARC FREEDMAN  
Civic Ventures

### NEED TO KNOW

See pages 8/9 for maps

Luggage Room: 0815 - 1730

Cloakroom: 0815 - 1730

Computer Room: 0815-1730



MICHAEL JENKINS  
Forest Trends



CARLOS SOUZA JR AND ADALBERTO VERÍSSIMO  
Imazon



ANDREW YOUN  
One Acre Fund



SCOTT GILMORE  
Peace Dividend Trust



AMBROSUIS RUWINDRIJARTO AND SILVERIUS  
OSCAR UNGGUL Telapak



MOLLY MELCHING  
Tostan

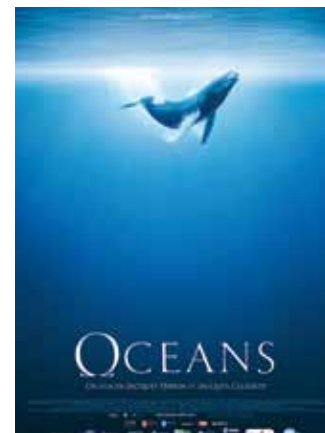
## 1900-2130

### AWARDS RECEPTION

#### EXAMINATION SCHOOLS

Join fellow delegates and Skoll Awardees at the University of Oxford Examination Schools.

## 2200-2330



### PRIVATE FILM SCREENING: OCEANS

ODEON THEATRE,  
63 GEORGE STREET

This exclusive pre-screening offers an unprecedented look beneath the sea in a powerful yet enchanting motion picture.

Free Admission

Limited Seating

Doors open at 2130

# FRIDAY

## 0900-1030

### COLLABORATION IN ACTION

#### GOVERNMENTS AND SOCIAL ENTREPRENEURS: Partnership versus subcontracting

NELSON MANDELA LECTURE THEATRE

With social challenges facing all governments, how many are turning to innovative social entrepreneurs for new approaches and operating models? What opportunities does this present for social entrepreneurs working globally? From the White House's newly established Social Innovation Fund to the emergence of Singapore as a regional hub for social entrepreneurship, this session will explore the perspective of senior government leaders on the public sector's aspirations in relation to entrepreneurial social ventures.

#### MODERATOR

**Stephen Goldsmith**, Professor, Harvard Kennedy School

#### SPEAKERS

**Dr. Vivian Balakrishnan**, Minister for Community Development, Youth and Sports, Singapore

**Ilse Treurnicht**, CEO, MaRS Discovery District, Toronto

**Peter Holbrook**, Chief Executive, Social Enterprise Coalition

### CRITICAL ISSUES

#### CLIMATE CHANGE POST-COPENHAGEN: Collaborating from the ground up

EDMOND SAFRA LECTURE THEATRE

The Copenhagen Climate Summit left the climate community wrestling with the best way to proceed in the absence of a global agreement on carbon emissions. Barring multi-national cooperation, progress must continue at the national and sub-national levels, calling on industries, non-governmental organisations, and social entrepreneurs to self-organise and collaborate to drive emission reductions. This cross cutting conversation engages participants from multiple sectors around opportunities for collaboration including how to bring about change from the bottom up.

#### MODERATOR

**George Polk**, Founder & CEO, The Catalyst Project

#### SPEAKERS

**Paul Hawken**, CEO, OneSun Solar

**Mindy Lubber**, President, Ceres

**Seema Paul**, CEO, Shakti Sustainable Energy Foundation

### COLLABORATION IN ACTION

#### DONOR COLLABORATION FOR ISSUE LEVEL IMPACT

RHODES TRUST LECTURE THEATRE

What happens when multiple donors, social entrepreneurs, government and civil society actors collaborate for impact? A groundbreaking initiative funded by AVINA and the Skoll Foundation is a live case study in the power of cross-sector, cross border collaboration. Our panellists - leading funders, experts in policy reform and indigenous land ownership, and innovators in satellite monitoring and data analysis - will discuss the ups and downs of crafting this integrated, multi-network approach and its effect on deforestation reduction and poverty alleviation in the Amazon region.

#### MODERATOR

**Federico Bellone**, Amazon Program Manager, Fundación AVINA

#### SPEAKERS

**Sally Osberg**, President & CEO, Skoll Foundation

**Brizio Biondi-Morra**, President, AVINA

**Mariano Cenamo**, Executive Secretary, Idesam

**Dr. Martín Von Hildebrand**, Director, Fundación Gaia Amazonas

**Adalberto Veríssimo**, Senior Research & Co-Founder, Imazon

## NEED TO KNOW

REGISTRATION  
0800 - 1230 | ENTRANCE HALL

Luggage Room: 0815 - 1730

Cloakroom: 0815 - 1730

Computer Room: 0815 - 1730

## ENTERPRISE ACCELERATOR

## NEXT GENERATION SOCIAL MEDIA FOR GREATER PROGRAMMATIC IMPACT

LECTURE THEATRE 4

Tech literate social entrepreneurs are using mobile technology and the latest in social media tools to loop staff, beneficiaries and supporters together in new and innovative ways. Going beyond the often siloed departments of communications and fundraising, this session will focus on cutting edge strategies and uses of social media for greater impact on mission objectives. Move beyond Facebook and Twitter and redesign your social media strategy to dissolve distances, expand roles of beneficiaries, donors and staff, and to increase your programmatic impact.

**MODERATOR**

**Jim Fruchterman**, President & CEO, Benetech Initiative

**SPEAKERS**

**Leila Chirayath Janah**, CEO, Samasource

**Monty Metzger**, CEO & Founder, Ahead of Time GmbH

**Marc Davis**, Chief Scientist & Co-Founder, Invention Arts

## INNOVATIVE FINANCE

## TAPPING INTO SOCIAL FINANCE FOR GROWTH: A clinic for practitioners

RECEPTION ROOM

Social entrepreneurs know all too well the limits of grant-driven growth, and are increasingly designing business models to tap into debt, equity, and other forms of finance to drive impact and scale. But these strategies can create organisational challenges for entrepreneurs and can send confusing signals to existing funders and partners. Led by proven investors and advisors, this clinic offers strategic and practical approaches to attracting investment dollars, effectively managing them once they arrive, and strategically employing them for heightened impact and scale.

**MODERATOR**

**Christine Eibs Singer**, CEO, E+Co

**SPEAKERS**

**Bim Hundal**, Chairman & Partner, Lions Head Global Partners

**Harold Rosen**, Executive Director, Grassroots Business Fund

**Jurie Willemse**, Managing Director, GroFin



## CONNECT AND COLLABORATE

SEMINAR ROOM A &amp; B

Table top conversations run in parallel with Forum sessions. Problem-solve challenges, share best practices, and network. Sign up with your discussion topic in Seminar A or join an existing group – first come, first served.



## NETWORKING

Connect with fellow delegates in the Networking Lounge, Entrance Hall and Common Room. The amphitheatre is also open in good weather. Seminar Room 13 is also available for meetings. See page 8 for maps.



## BREAK

1030-1100

Visit the Entrance Hall and Networking Lounge for refreshments and chat or enjoy some fresh air in the amphitheatre. The Common Room is open all day for delegates to meet and eat.

# FRIDAY

## 1100-1230

### INNOVATIVE FINANCE

#### THE COLOURS OF MONEY: Social financiers collaborating for impact

NELSON MANDELA LECTURE THEATRE

Investors are looking beyond the single bottom line, but still seek commercial returns on their investment. Philanthropists want to maximise impact with constrained resources. Governments recognise the limitations of development programmes to solve the world's most pressing problems. This session explores ways that investment, philanthropic and government resources are working together to create positive impact in innovative ways - through investment approaches that combine different 'colours of money,' working to help innovations escape the world of the small but beautiful.

#### MODERATOR

**Daniel Crisafulli**, Director, Investments and Partnerships, Skoll Foundation

#### SPEAKERS

**Laurie Spengler**, President & CEO, ShoreBank International Ltd.

**Toby Eccles**, Development Director, Social Finance

**Oliver Karius**, Partner, LGT Venture Philanthropy

### CRITICAL ISSUES

#### CANARY IN THE COAL MINE: H1N1 and global threat preparedness in the 21st Century

EDMOND SAFRA LECTURE THEATRE

Pandemics pose an inarguably daunting global threat: they are hard to predict, spread globally at rapid speed, impact people directly, and have the potential to stop commerce. The H1N1 virus presented us with the first pandemic of the 21st century, but how well did the world respond? This cross-sector conversation engages academics, policy-makers, social entrepreneurs, and audience members around what worked, what didn't, and what can be learned about the roles of government, industry, the social sector, and media when it comes to tackling a global threat.

#### MODERATOR

**Larry Brilliant**, President, Skoll Global Threats Fund

#### SPEAKERS

**Seth Berkley**, President & CEO, International AIDS Vaccine Initiative

**Angela McLean**, Professor of Mathematical Biology, All Souls College, University of Oxford

**Mark Smolinski**, Director, Global Health, Google.org

**David Heymann**, Chairman, Health Protection Agency, UK

### ENTERPRISE ACCELERATOR

#### REIMAGINING NETWORKS FOR INNOVATION AND IMPACT

RHODES TRUST LECTURE THEATRE

In a world where everyone is a co-creator, witness, reporter or educator, social networks have become more powerful than ever. With advancements in open sourced technology platforms, these exploding on-line networks can be used to fuel innovation, foster serendipity, give voice to beneficiaries, and collaborate with kindred thinkers. Join experts as they discuss the roles, barriers and future opportunities for networking to facilitate collaboration, heighten programmatic impact, and foster accountability and transparency.

#### MODERATOR

**Bruno Giussani**, European Director, TED Conferences

#### SPEAKERS

**Mona Eltahawy**, Columnist & Public Speaker, [www.monaeltahawy.com](http://www.monaeltahawy.com)

**Joichi Ito**, CEO, Creative Commons

**Liu Yan**, CEO & Co-Founder, Xindanwei

## NEED TO KNOW

See pages 8/9 for maps

See page 28 for speaker profiles



## CRITICAL ISSUES

## CLIMATE CHANGE, SOCIETAL DEMAND, AND FOOD SECURITY: Social entrepreneurs at the intersection

LECTURE THEATRE 4

By 2050, there will be an estimated 2.3 billion more people to feed, one third more than today. Additionally, new sources of food demand have emerged with increased use of food crops for bio fuels. Longstanding under-investment in agriculture, along with sharp increases in fuel and food prices followed by the economic crisis, have driven an estimated 100 million more people into poverty. This session brings together recognised experts and innovators in the field to outline solutions to this looming global threat.

## MODERATOR

**John Elkington**, Founder & Executive Chairman, Volans

## SPEAKERS

**Mark Fulton**, Global Head of Climate Change Investment Research, Deutsche Bank

**Mark Lynas**, Climate Writer, University of Oxford

**Ndidi Nwuneli**, Director, African Alliance for Capital Expansion

**Richard Jefferson**, CEO, Cambia

## COLLABORATION IN ACTION

## COLLABORATIVE LEADERSHIP: A practical toolkit

RECEPTION ROOM

How do you build an organisation in which everyone is a leader and has the resources and tools to drive change from within? In what ways can you increase organisational effectiveness and improve professional culture while maintaining an entrepreneurial environment? Participants in this hands-on workshop will work together to develop a framework for understanding what it takes to build an institution that values and supports changemakers, and then use what they have learned to collaboratively shape and refine their own organisational strategies.

## SPEAKERS

**Diana Wells**, President, Ashoka

**Charlie Brown**, Executive Director, Ashoka Changemakers



## CONNECT AND COLLABORATE

SEMINAR ROOM A &amp; 13

Table top conversations run in parallel with Forum sessions. Problem-solve challenges, share best practices, and network. Sign up with your discussion topic in Seminar A or join an existing group – first come, first served.



## LUNCH

1230 - 1400

Picnic lunch bags will be provided in the Entrance Hall.



## CLOSING PLENARY

SHELDONIAN THEATRE

1430-1600

Join fellow delegates at the Sheldonian Theatre for an inspired closing focused on persuasion, the building of a movement and realising a vision.

# FRIDAY

**1430-1600**

## CLOSING PLENARY

**1430-1600**

SHELDONIAN THEATRE | 15 MINUTE WALK  
DOORS OPEN AT 1345 | SEATING IS GENERAL ADMISSION

### OPENING REMARKS AND MASTER OF CEREMONIES

Pamela Hartigan, Director, Skoll Centre for Social  
Entrepreneurship

### THE POWER OF PERSUASION: Pulling in the reluctant collaborators

Caroline Casey, Founder & CEO, Kanchi

### ANATOMY OF A MOVEMENT

Aruna Roy, Activist, Mazdoor Kisan Shakti Sangathan  
with Nikhil Dey and Shankar Singh

### REALISING A VISION

Tim Smit, Chief Executive & Co-Founder, Eden Project

### CLOSING REMARKS

Stephan Chambers, Chairman of the Skoll Centre Standing  
Committee, Saïd Business School

### NEED TO KNOW

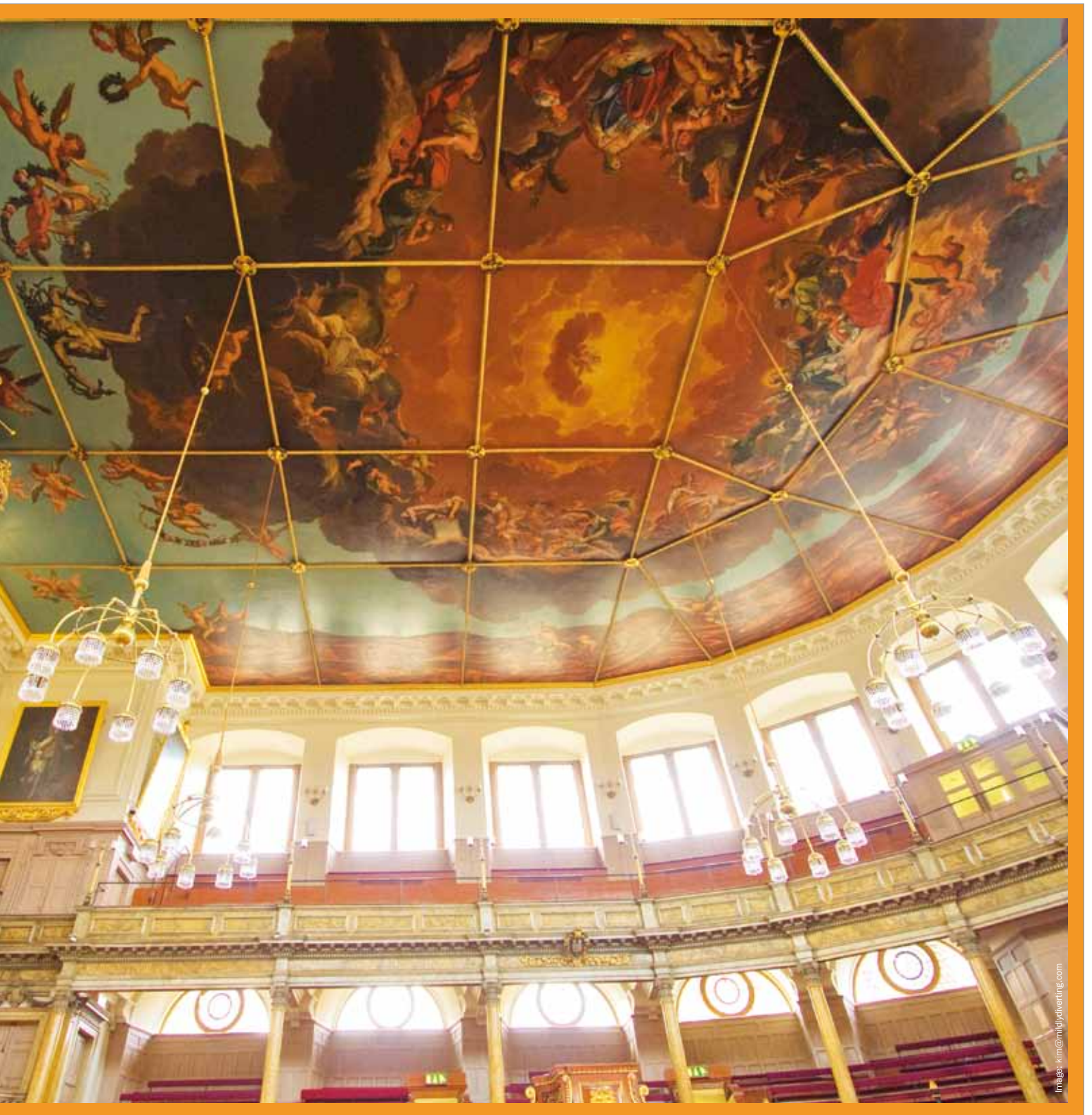
Luggage Room: 0815 - 1730

Cloakroom: 0815 - 1730

Computer Room: 0815 - 1730

See pages 8/9 for maps





# SPEAKERS

## BIOGRAPHIES



### HELMY ABOULEISH

Managing Director  
SEKEM Group

Helmy Abouleish is the Managing Director of SEKEM Group in Egypt. Under his stewardship, SEKEM received the Right Livelihood Award 2003, better known as the 'Alternative Nobel Prize', and became a member of the Schwab Foundation. He is a recognised leader of sustainable change in the Arab world, driving manifold initiatives in fields such as Organic Agriculture, Social Entrepreneurship and Responsible Competitiveness.

#### SPEAKING

##### 1100 THURSDAY

PARTNERING WITH ACADEMIA:  
Balancing tradition and  
transformational change

See page 16



### KARABI ACHARYA

Change Leader  
Ashoka

Karabi Acharya, ScD, is the global director of Ashoka Impact. She leads efforts to understand how Ashoka Fellows change systems. For over 15 years, she has worked in global health and development. Her interests include systems thinking, and organisational networks. She welcomes crossing boundaries and steadfastly refuses to choose one professional label (evaluator, trainer, activist) or work in one sector (health, agriculture).

#### SPEAKING

##### 1100 THURSDAY

THE POWER OF MANY:  
Collaborative impact and  
measurement

See page 16



### YVETTE ALBERDINGK THIJM

Executive Director

WITNESS

Yvette J. Alberdingk Thijm is Executive Director of WITNESS (witness.org), a global human rights organisation that uses video and technology to create change. She has over two decades of experience in media, strategic partnerships, and innovative technologies. She is a Trustee of the Foundation Center, and is on the Advisory Boards of uncensoredinterview.com and lionssthefilm.com.

#### SPEAKING

##### 1400 THURSDAY

LOCAL TALENT ON A GLOBAL  
SCALE: HR strategies for  
sustainability

See page 18



### BYRON AUGUSTE

Director, Social  
Sector Office

McKinsey &  
Company Inc.

Byron Auguste is a Director at McKinsey & Company, and the global leader of its Social Sector Office, housing worldwide practices in Economic Development, Education, Public Health, and Philanthropy, working with leading intergovernmental organisations, philanthropic foundations, NGOs, and businesses to develop and implement solutions to pressing societal challenges. He has authored one book, numerous articles and speeches on economics, education, technology, and globalisation, and serves on several non-profit and advisory boards addressing these themes.

#### SPEAKING

##### 0900 THURSDAY

BEYOND THE SINGLE BOTTOM  
LINE: Pioneers in blended value

See page 14



## DR. VIVIAN BALAKRISHNAN

Minister for Community Development, Youth and Sports, Singapore

Dr. Vivian Balakrishnan was appointed Minister for Community Development, Youth and Sports, Singapore in April 2005. Previously, he was Second Minister for Information, Communication and the Arts; Second Minister for Trade and Industry; Minister of State (National Development), and also the Minister responsible for entrepreneurship. In 2006, he convened the Social Enterprise Committee to advise on growing Singapore's social enterprise sector. He is a computer enthusiast and an avid reader. He is married with four children.

### SPEAKING

#### 0900 FRIDAY

GOVERNMENTS AND SOCIAL ENTREPRENEURS: Partnership versus subcontracting

See page 22



## MIKE BARRY

Head of Sustainable Business

Marks & Spencer

Mike Barry is Head of Sustainable Business at the UK retailer Marks & Spencer. Mike heads up the team that developed the company's groundbreaking Plan A, a 100 point plan to address a wide range of environmental and social issues. He helps provide the vision and the energy to affect change and ensure a leading but efficient approach to sustainability across the company. Prior to joining Marks & Spencer, Mike worked as an environment manager in the engineering sector and as an environmental consultant. He is a chemistry graduate from Sheffield University.

### SPEAKING

#### 0900 THURSDAY

BEYOND THE SINGLE BOTTOM LINE: Pioneers in blended value

See page 14



## FEDERICO BELLONE

Amazon Program Manager

Fundación AVINA

Federico Bellone is an environmentalist involved in conservation and climate change in the Amazon. As Amazon Program Manager for the AVINA foundation, he provides capacity building support to leading social entrepreneurs and institutions across the Amazon Basin countries, networking them into building shared agendas for sustainability. Born Italian, he has spent most of his life living and working throughout Latin America, and holds an MSc in environmental technology and water management.

### SPEAKING

#### 1100 THURSDAY

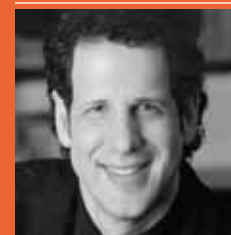
THE POWER OF MANY: Collaborative impact and measurement

See page 16

#### 0900 FRIDAY

DONOR COLLABORATION FOR ISSUE LEVEL IMPACT

See page 22



## JIM BERK

CEO

Participant Media

Jim is CEO, Participant Media, the leading provider of entertainment which inspires and compels social change. Jim oversees operations, strategy, media investment, acquisitions and TakePart.com. Before, Jim was CEO of Gryphon Colleges, Fairfield Communities and Hard Rock Café International. He also led The Grammy Foundation and was a public high school principal in Los Angeles. Jim currently serves on the boards of Summit Entertainment, MeToWe, Gryphon, Community in Schools, Soliya and the UCLA School of Theater, Film & Television.

### SPEAKING

#### 1400 THURSDAY

COMPELLING ACTION: Social change media in the age of information overload

See page 18

# SPEAKERS

## BIOGRAPHIES



### SETH BERKLEY

President & CEO

International AIDS  
Vaccine Initiative

Seth Berkley is President & CEO of the International AIDS Vaccine Initiative, a non-profit organisation working to ensure the development of preventive HIV vaccines for use throughout the world. Prior to founding IAVI, Berkley held positions at The Rockefeller Foundation, the U.S. Centers for Disease Control and Prevention, the Massachusetts Department of Public Health and the Carter Center. Berkley, a widely recognised leader in global health, was named by TIME magazine as “one of the 100 Most Influential People in the World.”

### SPEAKING

#### 1100 FRIDAY

CANARY IN THE COAL MINE: H1N1 and global threat preparedness in the 21st century

See page 24



### BRIZIO BIONDI-MORRA

President

AVINA

Brizio Biondi-Morra is President of AVINA, a foundation working in partnership with civil society and business leaders in Latin America on their initiatives toward sustainable development. AVINA has 19 offices in 14 countries. He is also Chairman of INCAE, the leading business school in Latin America. Brizio has published books on development for Cornell University Press, Editorial Siglo XXI and Nicaragua’s Central Bank. He has a doctorate in Business Administration, Harvard University and a doctorate in Economics, Bocconi University, Italy.

### SPEAKING

#### 0900 FRIDAY

DONOR COLLABORATION FOR  
ISSUE LEVEL IMPACT

See page 22



### DAVID BORNSTEIN

Chief Storyteller

Dowser Media

David Bornstein specialises in communicating ideas that advance social change. He is the author of *Social Entrepreneurship: What Everyone Needs to Know*; *How to Change the World: Social Entrepreneurs and the Power of New Ideas*; *The Price of a Dream: The Story of the Grameen Bank*, and the 2005 Hart House Lecture. He is the founder of the recently launched news media site, *Dowser.org*, which is designed to help establish social innovation as a legitimate category of daily news.

### SPEAKING

#### 0900 THURSDAY

STRUCTURING  
COLLABORATION: Mergers,  
partnerships and new  
business models

See page 14



### JENNY BOWEN

Founder & Executive  
Director

Half the Sky Foundation

Jenny Bowen established Half the Sky Foundation in 1998 after she saw her daughter and other children adopted from China blossom when they joined their families. Since then, more than 35,000 children living in Chinese orphanages have benefited from its programmes, which bring the love of family to children who have lost theirs. Aided by 30,000 supporters around the world, HTS is working with the Ministry of Civil Affairs on a ground-breaking plan to transform care for orphans in every province and municipality in China.

### SPEAKING

#### 1400 THURSDAY

WHEN DISASTER STRIKES:  
Social entrepreneurs  
managing through crisis

See page 19



## **JON BOWERMASTER**

**Writer & Filmmaker  
Oceans 8 Films**

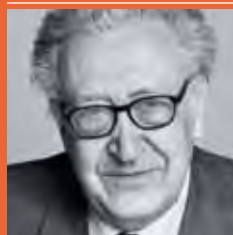
Jon Bowermaster is a six-time grantee of the National Geographic Expeditions Council and award-winning writer and film-maker. His recently concluded OCEANS 8 project took him and his teams around the world by sea kayak on expeditions ranging from the Aleutian Islands to Vietnam, French Polynesia to Chile/Argentina/Bolivia, Gabon to Croatia and Tasmania to Antarctica. Seeing the world from the seat of a sea kayak has given Bowermaster a one-of-a-kind look at both the health of the planet's ocean and the lives of people who depend on them.

### **SPEAKING**

#### **1400 THURSDAY**

OCEANS IN PERIL: Catalyzing international collaboration

See page 18



## **LAKHDAR BRAHIMI**

**Veteran United Nations  
Envoy and Advisor**

**Former Foreign Minister  
to Algeria**

In his distinguished career, Lakhdar Brahimi has served as Algeria's Foreign Minister and as Ambassador to Egypt and the UK. He mediated the end of Lebanon's civil war. At the United Nations, he led the Observer Mission to South Africa when Nelson Mandela was elected and served in Haiti and Afghanistan. He led the creation of the Brahimi Report, with ambitious recommendations to improve UN peacekeeping. He is a member of The Elders, a group of senior statesmen created by Mandela.

### **SPEAKING**

**1700 WEDNESDAY**  
OPENING PLENARY

See page 13

**0900 THURSDAY**  
PEACE BUILDING AND  
CONFLICT: The role for social  
entrepreneurs

See page 14



## **LARRY BRILLIANT**

**President**

**Skoll Global  
Threats Fund**

As a physician-epidemiologist, Larry worked in India on the WHO smallpox eradication programme. He founded The Seva Foundation, was VP and Executive Director of Google.org, and now chairs the National Biosurveillance Advisory Subcommittee. He is a member of the Council on Foreign Relations. Larry received the UNO Global Leadership Award, TED Prize and was named International Public Health Hero by University of California. Time magazine named him one of the most influential scientists and thinkers and one of the most influential people in the world.

### **SPEAKING**

**1100 FRIDAY**  
CANARY IN THE COAL MINE:  
H1N1 and global threat  
preparedness in the 21st  
century

See page 24



## **GIDON BROMBERG**

**Israeli Director**

**EcoPeace**

Gidon Bromberg is the Israeli Director of EcoPeace/Friends of the Earth Middle East. He speaks regularly on water, peace & security issues before forums such as the UN Commission for Sustainable Development; U.S. House Committee on Foreign Affairs; the European Parliament and the Advisory Meeting to the UN High Level Panel on Security. In 2007, Mr. Bromberg was invited to join the EastWest Institute's International Task Force for Preventive Diplomacy and was awarded a Fellowship at Yale University on global leadership.

### **SPEAKING**

**0900 THURSDAY**  
PEACE BUILDING AND  
CONFLICT: The role for social  
entrepreneurs

See page 14

**1100 THURSDAY**  
WATER SCARCITY AND THE  
HUMAN RIGHT TO WATER

See page 16

# SPEAKERS

## BIOGRAPHIES



### CHARLIE BROWN

Executive Director

Ashoka Changemakers

Charlie is the Executive Director of Ashoka's Changemakers ([www.changemakers.com](http://www.changemakers.com)), an online community that open sources innovative solutions to entrenched problems worldwide and builds communities of action to support them. Charlie specialises in open innovation and managing online problem solving communities. He has worked on environmental issues related to climate change, tourism, and innovations for the financial management of national parks in the U.S. and Jamaica. He has a business degree from Virginia Tech and MBA from the University of Denver.

#### SPEAKING

##### 1100 FRIDAY

COLLABORATIVE LEADERSHIP: A practical toolkit

See page 25



### LAURA CALLANAN

Consultant

McKinsey & Company Inc.

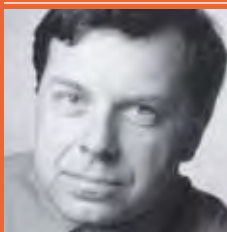
Laura Callanan leads McKinsey & Co's research on social impact assessment and social investing. Laura served as Senior Adviser at the United Nations Development Programme, and Executive Director of The Prospect Hill Foundation. As Associate Director at The Rockefeller Foundation, Laura had general management responsibility for the \$3bn endowment, and investment responsibility for the Foundation's venture capital and private equity portfolio. Laura was also a member of the Foundation's Program Venture Experiment (ProVenEx) commitment committee.

#### SPEAKING

##### 1100 THURSDAY

THE POWER OF MANY: Collaborative impact and measurement

See page 17



### PHILIP CAMPBELL

Editor-in-Chief

Nature

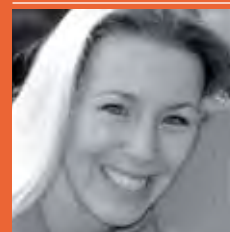
Dr. Philip Campbell is Editor-in-Chief of Nature and Nature Publications, based in London. He has a BSc in aeronautical engineering, an MSc in astrophysics and a PhD and postdoctoral research in upper atmospheric physics. His areas of responsibility include the editorial content and management of Nature and the long-term quality of all Nature publications. He was the founding editor of Physics World.

#### SPEAKING

##### 0900 THURSDAY

THE NEUROSCIENCE OF CHANGE: Understanding the brain, influencing behaviour

See page 15



### CAROLINE CASEY

Founder & CEO

Kanchi

Caroline Casey is the founding CEO of Kanchi and the O2 Ability Awards and is also an international speaker and adventurer. A social entrepreneur, Caroline sits on the board for several government, business and not-for-profit organisations. A former management consultant with Accenture, Caroline is visually impaired to the degree that she is registered as legally blind.

#### SPEAKING

##### 1430 FRIDAY

CLOSING PLENARY

See page 26





## MARIANO CENAMO

Executive Secretary

Idesam

Mariano Cenamo is a forest engineer from the University of Sao Paulo (ESALQ/USP), and has extensive experience on working with forest carbon projects over the last ten years. Mariano has been involved in many projects and initiatives related to REDD and forest conservation, working in partnership and providing support to institutions like the World Bank, Government of Amazonas, Amazonas Sustainable Foundation (FAS), Katoomba Group, AVINA, IPAM, TNC, and others.

### SPEAKING

0900 FRIDAY

DONOR COLLABORATION FOR  
ISSUE LEVEL IMPACT

See page 22



## STEPHAN CHAMBERS

Chairman of the Skoll  
Centre Standing  
Committee

Saïd Business School

Stephan Chambers is Chairman of the Skoll Centre Standing Committee at the University of Oxford's Saïd Business School, where he is also Director of the MBA and Executive MBA degrees. He is Chairman of IWA Publishing and serves on the advisory board of Princeton University Press. Before joining the business school he was a director of Blackwell Publishing. He is a Fellow of St Cross College and the founder of the Free Business School. He is married with two daughters.

### SPEAKING

1430 FRIDAY

CLOSING PLENARY

See page 26



## DAVID CHEN

Principal

Equilibrium  
Capital Group

Dave Chen's focus on sustainability is a result of his work in venture capital, regional economic development and energy policy. Previously a partner at OVP Venture Partners, in late 2007 he formed Equilibrium Capital Group – the most focused, integrated, and market-leading investment firm in sustainability. Dave is a graduate of UC Berkeley & Northwestern's Kellogg School of Management. Dave is on the faculty at Kellogg and the Prince of Wales's Business & the Environment Programme, University of Cambridge.

### SPEAKING

1100 THURSDAY

SOCIAL GOOD WITH MARKET  
RETURNS? Investors and  
entrepreneurs are having it  
both ways

See page 16



## LEILA CHIRAYATH JANAH

CEO

Samasource

Leila Chirayath Janah is Founder and CEO of Samasource, a social business that connects over 600 women, youth, and refugees living in poverty to digital work. Samasource, a grantee of the Rockefeller and Mulago Foundations, is a recipient of the Netexplorateur Innovation Prize and has been profiled by CBS, CNN, and The New York Times. Ms. Janah serves on the boards of the San Francisco Social Enterprise Institute and Tech Soup Global. She received a BA from Harvard.

### SPEAKING

0900 FRIDAY

NEXT GENERATION SOCIAL  
MEDIA FOR GREATER  
PROGRAMMATIC IMPACT

See page 23

# SPEAKERS

## BIOGRAPHIES



### ANDREA COLEMAN

Chief  
Executive Officer  
Riders for Health

Andrea Coleman is chief executive officer of Riders for Health and has guided the financial and advocacy development of the organisation from its inception. She established the entrepreneurial and innovative fundraising initiatives that have underpinned the organisation's growth. Andrea's work is key to the success of the field programmes established and developed by her co-founder and executive director, Barry Coleman.

#### SPEAKING

##### 0900 THURSDAY

STRUCTURING  
COLLABORATION: Mergers,  
partnerships and new  
business models

See page 14



### ANN COTTON

Executive Director  
Camfed International

In 1991, Ann Cotton went to Zimbabwe to study the reasons behind rural girls' widespread exclusion from education. What she found inspired her to set up Camfed in 1993. Over 17 years, as the CEO of Camfed, Ann has overseen the expansion to 5 African countries, the establishment of the US Foundation and the delivery of educational benefits to 1,065,710 children, primarily girls. Ann has won numerous awards including the Skoll Award for Social Entrepreneurship and an honorary doctorate in law from the University of Cambridge.

#### SPEAKING

##### 1700 WEDNESDAY

OPENING PLENARY

See page 13



### DANIEL CRISAFULLI

Director, Investments  
and Partnerships  
Skoll Foundation

Daniel Crisafulli is the Director of Investments and Partnerships at the Skoll Foundation. Previously, Dan managed the Development Marketplace (DM), the World Bank's social innovation programme recognised as a 'best practice' by the Harvard Business Review. In 2000, he co-founded the Technology Venture Capital Group at the International Finance Corporation (IFC). Dan earned a bachelor's degree summa cum laude from Dartmouth College and a master's degree in public policy from the Harvard Kennedy School, where he was a Kennedy Scholar.

#### SPEAKING

##### 1100 FRIDAY

THE COLOURS OF MONEY:  
Social financiers collaborating  
for impact

See page 24



### LANCE CROFFOOT-SUEDE

Partner  
Linklaters LLP

Lance Croffoot-Suede is a litigation partner in the global law firm Linklaters LLP and a co-author of Linklaters' report on Camfed's governance model. Lance is based in New York and manages Linklaters' pro bono and community investment programme in that office, as well as serves, pro bono, as court appointed counsel to indigent criminal defendants in the federal criminal court in Manhattan.

#### SPEAKING

##### 1700 WEDNESDAY

OPENING PLENARY

See page 13



## MARC DAVIS

Chief Scientist &  
Co-Founder  
Invention Arts

Marc Davis is Chief Scientist of Invention Arts, which invents mobile and social technologies connecting people, the Web, and the world. Before Invention Arts, he was Chief Scientist and VP Early Stage Products for Yahoo! Mobile. As Assistant Professor at UC Berkeley School of Information, he directed Garage Cinema Research, which pioneered context-aware mobile media uploading, tagging, and sharing, and context-aware face recognition. Marc has transformed his ideas into over 150 patent applications, and numerous prototypes, products, and publications.

### SPEAKING

#### 0900 FRIDAY

NEXT GENERATION SOCIAL  
MEDIA FOR GREATER  
PROGRAMMATIC IMPACT

See page 23



## PETER DAYAN

Professor  
University College  
London

Peter Dayan is a theoretical neuroscientist. He builds mathematical and computational models of neural processing, with a particular emphasis on representation and learning. The models are informed and constrained by neurobiological, psychological and ethological data. He has been Director of the Gatsby Computational Neuroscience Unit at University College London (UCL) since 2002.

### SPEAKING

#### 0900 THURSDAY

THE NEUROSCIENCE OF  
CHANGE: Understanding the  
brain, influencing behaviour

See page 15



## NIKHIL DEY

Activist  
Mazdoor Kisan Shakti  
Sangathan

Nikhil Dey, aged 47, is one of the founder members of the MKSS along with Aruna Roy and Shankar Singh. He has been a part of the organisation's decision making collective and its numerous struggles of the poor for land, the payment of minimum wages, justice, and equality. He has also been a part of the organisation's involvement in larger campaigns - most notably for the People's Right to Information, the Right to Work, and the larger struggle for democratic rights.

### SPEAKING

#### 1430 FRIDAY

CLOSING PLENARY

See page 26

## FRED DE SAM LAZARO

Correspondent &  
Director

PBS NewsHour

Fred de Sam Lazaro directs the Project for Under-Told Stories at St. John's University in Minnesota, combining international journalism and teaching. He has served PBS' NewsHour since 1985 and directed films from India and the Congo (DRC) for the acclaimed series, Wide Angle. His focus is on areas such as global health and development and solutions-oriented reporting on social entrepreneurship.

### SPEAKING

#### 1100 THURSDAY

WATER SCARCITY AND THE  
HUMAN RIGHT TO WATER

See page 16

# SPEAKERS

## BIOGRAPHIES



### JAKE EBERTS

**Independent  
Producer**

In a career spanning more than three decades, Jake Eberts has financed, produced, or executive produced over fifty films. These films have been nominated for 65 Academy Awards, including eight for Best Picture. Eberts currently serves as Chairman of National Geographic Films and as Advisor to Participant Media.

#### SPEAKING

##### 1400 THURSDAY

OCEANS IN PERIL: Catalysing international collaboration

See page 18



### TOBY ECCLES

**Development Director  
Social Finance**

Toby Eccles founded Social Finance and has been working on impact investment since October 2005 when he joined the Commission on Unclaimed Assets. Previously he was Director of Research at ARK, a child focused foundation, where he built programmes in the UK and South Africa. In the commercial world Toby worked in corporate finance at UBS Warburg, and for Data Connection, a leading UK software company. He is a non-executive director of Antidote, a charity developing emotional intelligence in schools. Toby holds a BA in Maths from Oxford.

#### SPEAKING

##### 1100 FRIDAY

THE COLOURS OF MONEY: Social financiers collaborating for impact

See page 24



### CHRISTINE EIBS SINGER

**CEO**

**E+Co**

Christine Eibs Singer, ECo's Co-Founder and Chief Executive Officer, is responsible for the vision and strategy behind ECo's mission to create energy enterprises that alleviate poverty and protect the planet. She has over 20 years of experience in the successful implementation of public-private partnerships and regularly shares her knowledge and best practices with other thought leaders in this sector.

#### SPEAKING

##### 0900 FRIDAY

TAPPING INTO SOCIAL FINANCE FOR GROWTH: A clinic for practitioners

See page 23



### JOHN ELKINGTON

**Founder & Executive  
Chairman**

**Volans**

John Elkington is the Founding Partner & Executive Chairman of Volans (2008), and Co-founder of SustainAbility (1987). He is a world authority on corporate responsibility and sustainable development. In 2004, BusinessWeek described him as "a dean of the corporate responsibility movement for three decades." John co-authored The Power of Unreasonable People: How Entrepreneurs Create Markets to Change the World with Pamela Hartigan.

#### SPEAKING

##### 1100 FRIDAY

CLIMATE CHANGE, SOCIETAL DEMAND, AND FOOD SECURITY: Social entrepreneurs at the intersection

See page 25



## MONA ELTAHAWY

Columnist & Public Speaker

[www.monaeltahawy.com](http://www.monaeltahawy.com)

Mona Eltahawy is a New York-based award-winning columnist and public speaker on Arab and Muslim issues. She is a columnist for Qatar's Al Arab newspaper, Israel's Jerusalem Report, Denmark's Politiken and Metro Canada and she has been published frequently in The Washington Post and the International Herald Tribune. Before moving to the U.S. in 2000, Mona was a reporter in the Middle East. Mona was born in Egypt and has lived in the U.K, Saudi Arabia and Israel.

### SPEAKING

**1100 FRIDAY**  
REIMAGINING NETWORKS  
FOR INNOVATION AND IMPACT

See page 24



## EVE ENSLER

Playwright & Founder  
V-Day

Eve Ensler is an internationally acclaimed playwright, activist and author of The Vagina Monologues. Eve's plays include Necessary Targets, The Treatment and The Good Body, and her books include Insecure At Last: A Political Memoir; A Memory, A Monologue, A Rant and a Prayer, and the recently published New York Times bestseller, I Am An Emotional Creature. She is also the founder of V-Day, the global movement to end violence against women and girls, which has raised over \$75 million for anti-violence groups worldwide.

### SPEAKING

**1100 THURSDAY**  
HOW TO BUILD A 'FIERCE,  
WILD UNSTOPPABLE  
MOVEMENT AND COMMUNITY'

See page 16



## INA EPKENHANS

Director  
PHINEO

Ina Epkenhans is Director of Analysis and Research at PHINEO. She spent five years in the Future of Civil Society Division at the Bertelsmann Foundation in Germany. This division supports more effective forms of philanthropy which is why the Bertelsmann Foundation – with partners – recently established PHINEO. PHINEO wants to provide orientation for donors by presenting approaches proven to yield outstanding impacts.

### SPEAKING

**1100 THURSDAY**  
THE POWER OF MANY:  
Collaborative impact and  
measurement

See page 17



## PAUL FARMER

Co-Founder  
Partners In Health

Dr. Paul Farmer is Presley Professor & Chair of the Department of Global Health & Social Medicine at Harvard Medical School, Chief of the Division of Global Health Equity at Brigham and Women's Hospital, and co-founder of Partners In Health. With his colleagues, Dr. Farmer has pioneered novel, community-based treatment strategies for infectious diseases in resource-poor settings that strengthen comprehensive health services.

### SPEAKING

**1700 WEDNESDAY**  
OPENING PLENARY

See page 13

**1400 THURSDAY**  
WHEN DISASTER STRIKES:  
Social entrepreneurs  
managing through crisis

See page 19

# SPEAKERS

## BIOGRAPHIES



### JILL FINLAYSON

Web Marketing  
Manager, Social  
Edge

Skoll Foundation

Jill Finlayson markets and develops content for Social Edge, the Skoll Foundation's online community for social entrepreneurs. Social Edge has discussions, blogs and resources including the Social Entrepreneur Search. Jill worked for eBay and was on the first eBay Foundation governance committee. She has developed online and offline educational materials for entrepreneurs and co-authored the McGraw Hill book Fundraising on eBay.

#### SPEAKING

##### 1400 THURSDAY

LOCAL TALENT ON A GLOBAL SCALE: HR strategies for sustainability

See page 19



### AMBASSADOR ELIZABETH FRAWLEY BAGLEY

Special Representative  
for Global Partnerships

Office of Secretary  
of State

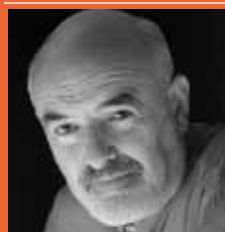
Ambassador Bagley was sworn in as Special Representative for Global Partnerships in the Office of the Secretary of State on June 18, 2009. She served as Senior Advisor under former Secretary of State Madeleine Albright where she established and headed the Office of Media Programming Acquisition for the newly independent Balkan states. From 1994 to 1997, she served as the U.S. Ambassador to Portugal. Ambassador Bagley is a longstanding member of The Council on Foreign Relations and the Clinton Library Foundation.

#### SPEAKING

##### 1400 THURSDAY

AID AGENCIES AND SOCIAL ENTREPRENEURS: Natural allies, new bridges

See page 18



### CHRIS FRITH

Emeritus Professor of  
Neuropsychology

University College  
London

Chris Frith is Emeritus Professor of Neuropsychology at the Wellcome Centre for Neuroimaging at University College London, and Niels Bohr Visiting Professor in the Interacting Minds project at the University of Aarhus in Denmark. He is a pioneer in application of brain imaging to the study of mental processes and in the study of the social brain. For this work he was elected a Fellow of the Royal Society in 2000. He has over 400 publications in scientific journals and is author of Making up the Mind: How the Brain Creates our Mental World.

#### SPEAKING

##### 0900 THURSDAY

THE NEUROSCIENCE OF CHANGE: Understanding the brain, influencing behaviour

See page 15



### JIM FRUCHTERMAN

President & CEO

Benetech Initiative

Jim Fruchterman is a leading social entrepreneur and CEO of Benetech, a non-profit technology company based in Palo Alto, California. He is a former rocket scientist who creates technology social enterprises targeting underserved markets including people with disabilities, the human rights and environmental conservation communities. Fruchterman has received a MacArthur Fellowship and the Skoll Award for Social Entrepreneurship.

#### SPEAKING

##### 0900 FRIDAY

NEXT GENERATION SOCIAL MEDIA FOR GREATER PROGRAMMATIC IMPACT

See page 23



## MARK FULTON

Global Head of Climate Change Investment Research

Deutsche Bank

Mark Fulton joined Deutsche Bank in 2006 as Global Head of Climate Change Investment Research, DB Climate Change Advisors: New York. Prior to this, he had 29 years of investment experience in senior roles in research and management at Citigroup in the US, Salomon Smith Barney and NatWest in Sydney, Potter Partners in Melbourne and James Capel in London. He has a BA in Philosophy & Economics from Oxford University.

### SPEAKING

#### 1100 FRIDAY

CLIMATE CHANGE, SOCIETAL DEMAND, AND FOOD SECURITY: Social entrepreneurs at the intersection

See page 25



## SCOTT GILMORE

Executive Director  
Peace Dividend Trust

Scott Gilmore is the founder of Peace Dividend Trust a non-profit that finds, tests, and promotes new ideas for improving peace and humanitarian operations. PDT has helped the United Nations to standardise how it launches peacekeeping missions; and its Peace Dividend Marketplace project has redirected over \$400 million into the Afghan economy. Scott was previously an entrepreneur, a Canadian diplomat and worked for the UN. In 2009, he was named one of Canada's Top 40 Under 40.

### SPEAKING

#### 0900 THURSDAY

PEACE BUILDING AND CONFLICT: The role for social entrepreneurs

See page 14



## BRUNO GIUSSANI

European Director  
TED Conferences

Bruno Giussani is the European director of TED ([www.ted.com](http://www.ted.com)), a non-profit devoted to Ideas Worth Spreading, and the curator of the annual TEDGlobal conference. He is also a well-known author and an entrepreneur who has co-founded three internet companies. He is a member of the Board of the Knight Fellowships at Stanford University. He is based in Switzerland.

### SPEAKING

#### 1100 FRIDAY

REIMAGINING NETWORKS FOR INNOVATION AND IMPACT

See page 24



## PETER GLEICK

President  
Pacific Institute

Dr. Peter Gleick is co-founder and president of the Pacific Institute, Oakland, California. His work addresses the connections between water and health, human rights, climate change, privatisation, and international conflicts. Gleick was named a MacArthur Fellow in 2003 and elected to the US National Academy of Sciences in 2006. Gleick received a B.S. from Yale and a Ph.D. from the University of California, Berkeley. He is the author of eight books, including *The World's Water* (Island Press, Washington).

### SPEAKING

#### 1100 THURSDAY

WATER SCARCITY AND THE HUMAN RIGHT TO WATER

See page 16

# SPEAKERS

## BIOGRAPHIES



### IAN GOLDIN

Director

James Martin 21st Century School

Ian Goldin is Director of the James Martin 21st Century School and a Professorial Fellow at Balliol College, University of Oxford. Previously he was Vice President of the World Bank after serving as Chief Executive of the Development Bank of Southern Africa. Earlier, he worked as Principal Economist at EBRD, and at OECD in Paris. He has published 13 books, his most recent being *Globalisation for Development* (Palgrave). He has a BSc and BA (Hons) from the University of Cape Town, MSc from London School of Economics and MA and DPhil from Oxford University.

### SPEAKING

#### 1100 THURSDAY

PARTNERING WITH ACADEMIA: Balancing tradition and transformational change

See page 17



### SAM GOLDMAN

CEO

D.light Design

Sam Goldman is D.light's co-founder and CEO. He has founded and managed ventures in India and Africa for 10 years, including improved agriculture and construction businesses, an agricultural training centre, and a for-profit NGO cultivating the miracle tree Moringa. He has distributed low-cost latrines, cook stoves and rain cisterns in rural Africa. Sam has lived in Cameroon, Mauritania, Pakistan, Peru, India, Rwanda, Canada and USA. He has an MSc Biology and MBA from Stanford. Read Sam's blog on Social Edge.

### SPEAKING

#### 1400 THURSDAY

LOCAL TALENT ON A GLOBAL SCALE: HR strategies for sustainability

See page 19



### STEPHEN GOLDSMITH

Professor

Harvard Kennedy School

Stephen Goldsmith is a Professor of Government and the Director of the Innovations in American Government Program at Harvard University's Kennedy School of Government. He is the Chairman of the Corporation for National and Community Service. Goldsmith served two terms as mayor of Indianapolis, America's twelfth-largest city, where he earned a reputation as one of the country's most innovative public officials. His latest book, *The Power of Social Innovation*, suggests a path for better relationships between government and social entrepreneurs.

### SPEAKING

#### 0900 FRIDAY

GOVERNMENTS AND SOCIAL ENTREPRENEURS: Partnership versus subcontracting

See page 22



### DIANA GOOD

Partner

Linklaters LLP

Diana Good was a litigation partner of the global law firm Linklaters LLP for 20 years. She is now working as a co-author with Linklaters of a report on the governance model of Camfed. She has a part time judicial appointment and also works in the not for profit sector as the chair of the Mary Ward Settlement which runs both an adult education centre and a free legal advice centre for the disadvantaged and excluded.

### SPEAKING

#### 1700 WEDNESDAY OPENING PLENARY

See page 13





### ALVIN HALL

Broadcaster, Author  
& President

Cooperhall Press Inc

Alvin Hall is an internationally renowned financial educator. His best-selling books include "Your Money or Your Life," "Getting Started in Stocks," and a children's book, "Show Me the Money," published in 20 languages. He has presented several BBC2 television series and programmes on BBC Radio 4. This year, Hall presented the BBC World News series "Alvin's Guide to Good Business," featuring social entrepreneurs in Africa, Asia, and the US. Hall lives in New York City where he teaches classes about the financial markets.

#### SPEAKING

##### 1400 THURSDAY

COMPELLING ACTION: Social change media in the age of information overload

See page 18



### PAMELA HARTIGAN

Director

Skoll Centre for Social  
Entrepreneurship

Dr. Hartigan is Director of the Skoll Centre for Social Entrepreneurship at Said Business School and Founding Partner of Volans Ventures. She spent eight years as the Managing Director of the Schwab Foundation for Social Entrepreneurship where she created the vision, strategic orientation and management of the Schwab Foundation from its inception. She is a widely recognised global leader in the field of social entrepreneurship and co-authored The Power of Unreasonable People: How Entrepreneurs Create Markets to Change the World with John Elkington.

#### SPEAKING

##### 1700 WEDNESDAY

OPENING PLENARY

See page 13

##### 1430 FRIDAY

CLOSING PLENARY

See page 26



### JÖRG HARTMANN

Executive Director

GTZ

Jörg Hartmann has been managing GTZ's Centre for Cooperation with the Private Sector since 2004. On behalf of the German government, the Centre has initiated over 1000 partnerships with business in development cooperation. Integrating public and private sector perspectives Jörg chairs the German Global Compact Network and an advisory group on Germany's national Corporate Responsibility strategy. Before joining GTZ, he held various positions at BASF. Jörg holds degrees from the Universities of Heidelberg, Germany and Pietermaritzburg, South Africa.

#### SPEAKING

##### 1400 THURSDAY

AID AGENCIES AND SOCIAL ENTREPRENEURS: Natural allies, new bridges

See page 18



### PAUL HAWKEN

CEO

OneSun Solar

Paul Hawken is an author and businessman. His books have been published in over 50 countries and 27 languages. They include The Ecology of Commerce, Natural Capitalism, and Blessed Unrest. He is CEO of OneSun, Solar.

#### SPEAKING

##### 1730 THURSDAY

SKOLL AWARDS FOR SOCIAL ENTREPRENEURSHIP

See page 20

##### 0900 FRIDAY

CLIMATE CHANGE POST-COPENHAGEN: Collaborating from the ground up

See page 22

# SPEAKERS

## BIOGRAPHIES



### DAVID HEYMANN

Chairman

Health Protection Agency, UK

Dr. David Heymann is the Chairman of the Health Protection Agency. Previously, he was Assistant Director-General for Health Security and Environment at WHO. Dr Heymann worked for 13 years in sub-Saharan Africa for US Centers for Disease Control and Prevention. He is a recipient of the American Public Health Association Award for Excellence and was named to the United States Institute of Medicine. Currently he is also the Director of the Global Health Security Centre at Chatham House

#### SPEAKING

##### 1100 FRIDAY

CANARY IN THE COAL MINE: H1N1 and global threat preparedness in the 21st century

See page 24



### PETER HOLBROOK

Chief Executive

Social Enterprise Coalition

Peter Holbrook is CEO of the Social Enterprise Coalition - the UK's national body for social enterprise representing a wide range of social enterprises, regional and national support networks and other related organisations. The Coalition's key activities are centred on informing and influencing the policy agenda, promoting the benefits of social enterprise and undertaking research to expand the social enterprise evidence base. Peter was previously CEO of Sunlight Development Trust which works to tackle long-standing health and social inequalities.

#### SPEAKING

##### 0900 FRIDAY

GOVERNMENTS AND SOCIAL ENTREPRENEURS: Partnership versus subcontracting

See page 22



### DEBORAH HOLMES

Global Director, Corporate Responsibility

Ernst & Young LLP

Deborah K. Holmes established and leads Ernst & Young's Corporate Responsibility function, focused on skill-based volunteerism in the '3Es' - education, entrepreneurship and environmental sustainability. From 1996 to 2004, she led Ernst and Young's award-winning gender equity work. Ms. Holmes, a published author and frequent public speaker, earned her J.D. from Harvard Law School and her B.A. in Government, magna cum laude, from Harvard College. She lives in New York City with her college sweetheart and her two school-aged sons.

#### SPEAKING

##### 0900 THURSDAY

BEYOND THE SINGLE BOTTOM LINE: Pioneers in blended value

See page 14



### RUPERT HOWES

CEO

Marine Stewardship Council

Rupert Howes has been Chief Executive of the Marine Stewardship Council (MSC) since October 2004. He received the Skoll Award for Social Entrepreneurship in 2007 for his work in establishing the MSC as the world's leading fishery certification and eco-labelling programme. A lifelong committed environmentalist and a professionally qualified accountant, Rupert came to the MSC from the influential UK organisation Forum for the Future where he was the Director of the Sustainable Economy Programme.

#### SPEAKING

##### 1400 THURSDAY

OCEANS IN PERIL: Catalyzing international collaboration

See page 18



## **BIM HUNDAL**

**Chairman & Partner**

**Lions Head Global Partners**

Bim Hundal is a founding Partner of Lions Head Global Markets, an investment bank focused on emerging markets and development. LHGP is a pioneer in using capital markets to help meet development objectives, and is often engaged in areas not normally served by the capital markets, such as African agriculture. Prior to this, Mr. Hundal was a Managing Director at Goldman Sachs where he ran their emerging markets financing business in Central Europe, CIS, Middle East and Africa.

### **SPEAKING**

#### **0900 FRIDAY**

TAPPING INTO SOCIAL FINANCE FOR GROWTH: A clinic for practitioners

See page 23



## **JOICHI ITO**

**CEO**

**Creative Commons**

Joichi Ito is the CEO of Creative Commons. He has created numerous internet companies including PSINet Japan, Digital Garage and Infoseek Japan and was an early stage investor in Twitter, Six Apart, Wikia, Flickr, SocialText, Dopplr, Last.fm, Rupture and other internet companies.

### **SPEAKING**

#### **1100 FRIDAY**

REIMAGINING NETWORKS FOR INNOVATION AND IMPACT

See page 24



## **RICHARD JEFFERSON**

**CEO**

**Cambia**

Dr. Richard Jefferson is CEO of Cambia, founded two decades ago to democratize science-enabled innovation. Richard is a prominent molecular biologist, agricultural scientist, innovation system strategist and social entrepreneur. He founded the Biological Open Source Initiative (BiOS), Patent Lens, the Initiative for Open Innovation (IOI) and is Professor of Science, Technology & Law at Queensland University of Technology.

### **SPEAKING**

#### **1100 FRIDAY**

CLIMATE CHANGE, SOCIETAL DEMAND, AND FOOD SECURITY: Social entrepreneurs at the intersection

See page 25



## **PARI JHAVERI**

**Executive Director**

**Third Sector Partners**

Pari Jhaveri heads Third Sector Partners, a high end executive search firm which recruits senior management and boards across verticals of NGOs, CSR, BOP markets. Pari is Co-founder of barefootjobs.org, India's first interactive job portal for NGO sector and Katalyst, an initiative for underprivileged girls enabling their higher education and economic emancipation.

### **SPEAKING**

#### **1400 THURSDAY**

LOCAL TALENT ON A GLOBAL SCALE: HR strategies for sustainability

See page 19

# SPEAKERS

## BIOGRAPHIES



### LAKSHMI KARAN

Director, Impact Assessment & Learning

Skoll Foundation

As Director of Impact Assessment and Learning, Lakshmi Karan is responsible for assessing Skoll Foundation's investment performance and effectiveness. Prior to Skoll, Lakshmi was a consultant to Fortune 500 companies, specialising in systems design and knowledge management. Within the social sector, she has worked with global organisations on strategy, program management and assessment. Lakshmi has master's degrees in both systems management and international relations, and a Ph.D. in nonprofit effectiveness and organisational learning.

#### SPEAKING

##### 1100 THURSDAY

THE POWER OF MANY:  
Collaborative impact and measurement

See page 17



### OLIVER KARIUS

LGT Venture Philanthropy

Oliver Karius is a partner at LGT Venture Philanthropy and has over 12 years experience in sustainable and socially responsible investment, venture philanthropy and corporate sustainability strategy consulting. He is the co-founder of the WEF aligned African Social Entrepreneurship Network, DeRisk, VantagePoint Global, and worked previously for SAM Sustainable Asset Management, the Dow Jones Sustainability Index, F&C Investment Management and MunichRe. Oliver holds an MSc in Global Environmental Change and Policy, Imperial College, UK and MSc from Ludwig Maximilians University, Germany.

#### SPEAKING

##### 1100 FRIDAY

THE COLOURS OF MONEY:  
Social financiers collaborating for impact

See page 24



### CRAIG KIELBURGER

Chair & Founder

Free The Children

Craig Kielburger is the founder of Free The Children, a unique international development and youth empowerment organisation. In addition to building 500 schools that provide daily education to over 50,000 students in the developing world, Free The Children impacts more than one million young people across North America. A humanitarian, social activist and New York Times bestselling author, Craig is also the co-founder of Me to We, a social enterprise that encourages ethical living and social responsibility through daily choices.

#### SPEAKING

##### 1400 THURSDAY

WHEN DISASTER STRIKES:  
Social entrepreneurs managing through crisis

See page 19



### RACHEL KYTE

Vice President

International Finance Corporation

Rachel Kyte is IFC's Vice President, Business Advisory Services. IFC's advisory work serves governments, industries, and companies. Ms. Kyte joined IFC in 2000. In 2004 she became Director for Environment and Social Development, where she introduced new sustainability performance standards and worked on energy efficiency finance, sustainable supply chains, labour practices and gender entrepreneurship.

#### SPEAKING

##### 1400 THURSDAY

AID AGENCIES AND SOCIAL ENTREPRENEURS: Natural allies, new bridges

See page 18



## ELIZABETH LITTLEFIELD

Director

CGAP

Ms. Littlefield is a Director of the World Bank and the CEO of CGAP, an independent policy and research centre that advances access to financial services for the world's poor. CGAP develops standards, provides advisory services, generates market analytics and funds experiments in expanding access to finance. Previously, Ms Littlefield was the Managing Director in charge of Emerging Markets Capital Markets for JP Morgan in London. She has served on the executive board of Women's World Banking, Profund, MasterCard Foundation, Calvert Foundation, and E&Co.

### SPEAKING

**1400 THURSDAY**  
AID AGENCIES AND SOCIAL ENTREPRENEURS: Natural allies, new bridges

See page 18



## MINDY LUBBER

President

Ceres

Mindy S. Lubber, JD/MBA, is President of Ceres. Ceres, a leading coalition of investors and environmental organisations, works with companies and investors to build sustainability into the capital markets and to address sustainability challenges such as global climate change. She also directs the Investor Network on Climate Risk (INCR) - a network of 80 institutional investors representing over \$8 trillion in assets - coordinating U.S. investor responses to the financial risks and opportunities posed by climate change.

### SPEAKING

**0900 FRIDAY**  
CLIMATE CHANGE POST-COPENHAGEN: Collaborating from the ground up

See page 22



## MARK LYNAS

Climate Writer

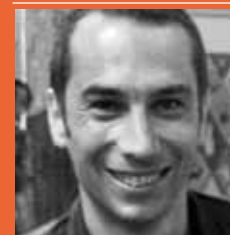
University of Oxford

Mark Lynas is author of two best-selling popular books on climate change, High Tide (2004) and Six Degrees (2007), each published in more than a dozen languages. The latter became a National Geographic film seen by millions around the world and won the prestigious Royal Society Prize for Science Books 2008. He is currently a visiting academic at Oxford University's Environmental Change Institute and advisor on climate change to the President of the Maldives.

### SPEAKING

**1100 FRIDAY**  
CLIMATE CHANGE, SOCIETAL DEMAND, AND FOOD SECURITY: Social entrepreneurs at the intersection

See page 25



## SÉBASTIEN MAROT

International Coordinator

Friends-International

Sébastien Marot is Founder and Executive Director of Friends-International, a leading social enterprise supporting marginalised children and youth. With his team of 500 staff he has led the expansion of the organisation into 12 countries across four continents, developing best practice services and social businesses. In recognition of his work he has received several international awards including the Order of Australia.

### SPEAKING

**1400 THURSDAY**  
LOCAL TALENT ON A GLOBAL SCALE: HR strategies for sustainability

See page 19

# SPEAKERS

## BIOGRAPHIES



### ISABELLA MATAMBANADZO

Chief Executive Officer

The Zimbabwe Trust

Bella Matambanadzo is CEO of The Zimbabwe Trust, a non-profit supporting Zimbabwe's economic recovery. She has worked in radio, print and television, covering news in 36 African countries for agencies such as the Southern African Economist, Inter Press Service (IPS), the Zimbabwe Broadcasting Corporation's (ZBC) Radio One and Reuters' Africa Journal. Previously, she was Zimbabwe Country Programme Manager for the Soros Foundation's Open Society Initiative for Southern Africa, and Chairperson of the Board of Trustees of Radio Voice of the People (VOP).

#### SPEAKING

##### 0900 THURSDAY

PEACE BUILDING AND CONFLICT: The role for social entrepreneurs

See page 14



### COLIN MAYER

Peter Moores  
Dean, Professor  
of Management  
Studies

Saïd Business School

Colin Mayer is Dean of the Saïd Business School. He created the most prestigious networks of economics, law and finance academics in Europe at the Centre for Economic Policy Research (CEPR) and the European Corporate Governance Institute (ECGI). He has held visiting fellowships at Stanford, MIT and Brussels University (ULB). He is a Fellow of the European Corporate Governance Institute and an Honorary Fellow of Oriel College and St Anne's College, Oxford. Mayer is Chairman of Oxera Holdings Ltd, one of the largest economics consultancies in the UK.

#### SPEAKING

1700 WEDNESDAY  
OPENING PLENARY

See page 13



### JOHN MCCALL MACBAIN

Founder & Director

McCall MacBain  
Foundation

John McCall MacBain was born in Niagara Falls, Ontario, Canada. John received his Economics degree from McGill University in Montreal, Canada, his Master's degree in Law as a Rhodes Scholar at Oxford University and his M.B.A. from Harvard Business School. He was the Founder, President and CEO as well as controlling shareholder of Trader Classified Media NV from 1987 to 2006. After selling the company, John started the McCall MacBain Foundation with his wife Marcy, a family Foundation based in Geneva involved in Health, Education and Environment.

#### SPEAKING

1100 THURSDAY  
SOCIAL GOOD WITH MARKET RETURNS? Investors and entrepreneurs are having it both ways

See page 16



### ANGELA MCLEAN

Professor of  
Mathematical Biology

All Souls College,  
University of Oxford

Angela McLean studied Mathematics at Oxford and received her PhD in Biomathematics from Imperial College. She held a Royal Society URF in Oxford's Zoology Department and in Immunology at the Pasteur Institute in Paris. She is now a Senior Research Fellow at All Souls College, Professor of Mathematical Biology in the Department of Zoology and Director of the Institute for Emerging Infections in the James Martin 21st Century School. Angela was elected to the Royal Society in 2009.

#### SPEAKING

1100 FRIDAY  
CANARY IN THE COAL MINE: H1N1 and global threat preparedness in the 21st century

See page 24



## JEFF MENDELSON

Founder and CEO

### New Leaf Paper

Jeff Mendelsohn founded New Leaf Paper with the mission of inspiring a fundamental shift toward sustainability in the paper industry. Jeff envisions a complete redesign of the industry based on natural systems and sustainable design. Since it was founded in 1998, New Leaf Paper has driven real change in the marketplace through education and product innovation. Jeff is also deeply engaged in expanding the socially responsible business community.

### SPEAKING

#### 0900 THURSDAY

BEYOND THE SINGLE BOTTOM LINE: Pioneers in blended value

See page 14



## CARA MERTES

Director

### Sundance Institute Documentary Film Program

Cara Mertes is an award-winning executive producer, director, programmer and journalist. She oversees the Sundance Institute Documentary Film Program, including \$1 million annual granting, Creative Labs, partnerships and initiatives supporting contemporary issue documentary globally. She has been awarded Emmy's, Peabody's and DuPont-columbia Awards, and three times Academy Awards nominated. She inaugurated the 'Stories of Change' partnership in 2007 with the Skoll Foundation, which has nine films in production around social entrepreneurs and their issues.

### SPEAKING

#### 1400 THURSDAY

COMPELLING ACTION: Social change media in the age of information overload

See page 18



## MONTY METZGER

CEO & Founder

### Ahead of Time GmbH

Monty C. M. Metzger is an entrepreneur, author and trend-scout. He is CEO of Ahead of Time, an innovation agency focusing on social media marketing, and he is founder of the open think tank about the future of mobile media, Mocom 2020. Monty founded his first company in 1998 and managed a global trend research consultancy. He studied Business Administration and Marketing in Germany and Switzerland, and he has just published the book Mobile Future 2020.

### SPEAKING

#### 0900 FRIDAY

NEXT GENERATION SOCIAL MEDIA FOR GREATER PROGRAMMATIC IMPACT

See page 23



## VIWE MGUDLWA

Site Coordinator

### mothers2mothers

Viwe Mgudlwa is a Site Coordinator at the mothers2mothers (m2m) site in the township of Khayelitsha, West Cape, South Africa. Viwe first joined m2m as a client when she learned she was positive during ante-natal care. At m2m she attended support groups and received treatment to ensure her baby was born HIV-negative. In 2007, Viwe became a Mentor Mother at the very clinic she received her treatment. She was soon promoted to Site Coordinator managing other Mentor Mothers who provide support to HIV-positive pregnant women on all issues around PMTCT.

### SPEAKING

#### 1400 THURSDAY

LOCAL TALENT ON A GLOBAL SCALE: HR strategies for sustainability

See page 19

# SPEAKERS

## BIOGRAPHIES



### PAT MITCHELL

President & CEO

The Paley Center  
For Media

Pat Mitchell is President and CEO of The Paley Center for Media. Pat has been a network correspondent, a documentary producer and President and CEO of PBS. Her career is characterised by a commitment to optimising the power of media to inform, inspire, entertain and empower. Her work has been recognised with 44 Emmy awards, five Peabody's, and two Academy Award nominations.

#### SPEAKING

##### 1100 THURSDAY

HOW TO BUILD A 'FIERCE,  
WILD UNSTOPPABLE  
MOVEMENT AND COMMUNITY'

See page 16



### READ MONTAGUE

Professor

Baylor College of  
Medicine

Dr. Read Montague's work focuses broadly on computational neuroscience - the connection between the physical mechanisms present in real neural tissue and the computational functions that these mechanisms embody. His most recent efforts seek to understand the neurobiological mechanisms underlying social exchange and its pathologies. He currently holds the Brown Foundation Chair of Neuroscience at Baylor College of Medicine.

#### SPEAKING

##### 0900 THURSDAY

THE NEUROSCIENCE OF  
CHANGE: Understanding the  
brain, influencing behaviour

See page 15



### FAITH NKALA

Deputy Executive  
Director

Camfed Zimbabwe

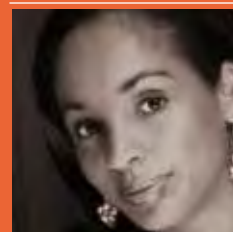
Faith Nkala is Deputy Executive Director and Head of Monitoring and Evaluation for Camfed in Zimbabwe. Faith is proud to have grown from being a beneficiary of Camfed to an outstanding role model. Her leadership in recent participatory and empowering research left rural communities appreciative of their tremendous contribution to girls' education and empowerment. Faith Nkala knows the enormous hurdles that girls from poor rural families face; her life bears testimony to the transformative power of education.

#### SPEAKING

##### 1700 WEDNESDAY

OPENING PLENARY

See page 13



### NDIDI NWUNELI

Director

African Alliance for  
Capital Expansion

Ndidi Nwuneli is the co-founder of AACE Foods, a social enterprise which preserves and processes the best fruits and vegetables in West Africa. Before AACE, Ndidi established and managed LEAP Africa, NIA, and the FATE Foundation, leading non profit organisations in Nigeria focused on leadership and entrepreneurship. She also worked as a management consultant with McKinsey & Company and diverse international development agencies. Ndidi is a graduate of the Harvard Business School and the Wharton School of the University of Pennsylvania.

#### SPEAKING

##### 1100 FRIDAY

CLIMATE CHANGE,  
SOCIETAL DEMAND, AND  
FOOD SECURITY: Social  
entrepreneurs at the  
intersection

See page 25





## NICK O'DONOHOE

Global Head of Research

JP Morgan

Nick O'Donohoe is Global Head of Research at JP Morgan, with responsibility for the Equity, Credit, Interest Rate, FX and Commodities research groups, and the Economics research department. He is a member of the Management Committee of the Investment Bank and the Executive Committee of JPMorgan Chase. He also sponsors the firm's Social Finance Group. Nick has a BA in Mathematical Economics and Statistics from Trinity College, Dublin, Ireland and an MBA from the Wharton School, University of Pennsylvania.

### SPEAKING

**1100 THURSDAY**  
SOCIAL GOOD WITH MARKET RETURNS? Investors and entrepreneurs are having it both ways

See page 16



## SALLY OSBERG

President & CEO

Skoll Foundation

As President and CEO of the Skoll Foundation, Sally Osberg leads the organisation in driving change by investing in, connecting and celebrating social entrepreneurs and others key to solving the world's most critical problems. Prior to the Skoll Foundation, Sally served as the founding Executive Director of Children's Discovery Museum, guiding it to national recognition. Currently, she sits on the boards of the Oracle Education Foundation, Partners for Sustainable Development, and the Skoll Global Threats Fund.

### SPEAKING

**0900 FRIDAY**  
DONOR COLLABORATION FOR ISSUE LEVEL IMPACT

See page 22



## AGNES PAREYIO

Project Coordinator

Tasaru Ntomonok Initiative

Agnes Pareyio was born on 24th June 1956 in Narok district, Kenya. She attended primary school, proceeded to high school and later on worked as an untrained teacher. In 1984, she involved herself in women issues, with a passion of advocating for rights of women in Maasailand, leading her to found the Tasaru Ntomonok Initiative, a girls rescue centre in Narok. She was elected as a councillor for Upper Melili Ward and Vice-Chairperson to the Narok council in 2002, where she still serves.

### SPEAKING

**1100 THURSDAY**  
HOW TO BUILD A 'FIERCE, WILD UNSTOPPABLE MOVEMENT AND COMMUNITY'

See page 16



## LAURA PARKIN

CEO

National Entrepreneurship Network

Laura is the CEO of the non-profit National Entrepreneurship Network (NEN), a Wadhvani Foundation initiative, which she co-founded in 2003 as Executive Director of the Wadhvani Foundation. NEN now comprises the largest entrepreneurial community in India, with more than 75,000 members, and has developed a highly effective model for rapidly scaling entrepreneurship education. Laura is a serial entrepreneur, having founded four companies. She was also a Vice President at Ashoka, and a venture capitalist at Highland Capital Partners.

### SPEAKING

**1100 THURSDAY**  
PARTNERING WITH ACADEMIA: Balancing tradition and transformational change

See page 17

# SPEAKERS

## BIOGRAPHIES



### SEEMA PAUL

CEO

Shakti Sustainable Energy Foundation

Seema Paul is currently CEO and Board member of the Shakti Sustainable Energy Foundation, a New Delhi-based organisation that promotes sustainable energy and transportation policies in India. Prior to joining Shakti, Ms. Paul served as Chief of Policy at UNAIDS, and prior to that as the Senior Program Officer in the Environment Team with Ted Turner's United Nations Foundation.

#### SPEAKING

##### 0900 FRIDAY

CLIMATE CHANGE POST-COPENHAGEN: Collaborating from the ground up

See page 22



### JAMES PHILLS

Professor

Center for Social Innovation, Stanford University

James A. Phills, Jr. is the Claude N. Rosenberg Jr. Director of Stanford's Center for Social Innovation and Professor of Organizational Behavior (Teaching) at the Stanford Graduate School of Business. Phills is also Academic Editor of the Stanford Social Innovation Review and Faculty Director of the Executive Program in Social Entrepreneurship (EPSE). His publications include *Integrating Mission and Strategy for Nonprofit Organizations* (Oxford University Press, 2005). Phills holds a B.A., M.A., and Ph.D., all from Harvard University.

#### SPEAKING

##### 1100 THURSDAY

PARTNERING WITH ACADEMIA: Balancing tradition and transformational change

See page 17



### DR. FELIX PHIRI

Director of Planning and Information

Ministry of Education, Zambia

With 15 years of working for the Zambian Government, Dr. Felix Phiri is currently the Director of Planning and Information at the Ministry of Education. Dr. Phiri holds technical expertise in the analysis and design of monitoring and evaluation systems, design of systems for aid effectiveness, and measuring HIV/AIDS and its socio-economic impacts. Research areas of interest include community financing and the universal coverage and quality of education and health care.

#### SPEAKING

##### 1700 WEDNESDAY

OPENING PLENARY

See page 13



### GEORGE POLK

Founder & CEO

The Catalyst Project

George Polk, a serial entrepreneur, stepped down as CEO of The Cloud in early 2007 to focus on climate change. Since then George has founded the European Climate Foundation, where he also served as CEO & Chairman. He also founded Project Catalyst, a major initiative related to the COP15 negotiations. George has also served as an adviser to George Soros on climate change related investments, Senior Advisor to McKinsey and the ClimateWorks Foundation, and is a Director of the Carbon War Room and Powerspan Corporation - a leader in carbon capture technology.

#### SPEAKING

##### 0900 FRIDAY

CLIMATE CHANGE POST-COPENHAGEN: Collaborating from the ground up

See page 22



## RAFAEL RAMÍREZ

James Martin Senior  
Research Fellow in  
Futures

University of Oxford

Rafael Ramírez is a James Martin Senior Research Fellow in Futures at the Oxford Institute for Science, Innovation & Society. He is also co-chairman of the World Economic Forum Global Agenda Council on Strategic Foresight. Past posts include Professor of Management, HEC Paris; Visiting Professor of Scenarios and Corporate Strategy, Shell International, and co-founder of Oxford Scenarios Programme and Oxford Futures Forum.

### SPEAKING

#### 0900 THURSDAY

NAVIGATING THE FUTURE:  
Scenario planning for social  
entrepreneurs

See page 15



## SUE RIDDLESTONE

Executive Director  
& Co-Founder

BioRegional  
Development Group

As a founder of BioRegional's One Planet programme, Sue Riddlestone has worked to introduce sustainable communities in countries from China to the USA. Sue has pioneered projects for sustainable paper use, including the MiniMill, new technology for small scale paper pulp production. As a member of the Mayor's London Sustainable Development Commission, Sue has set targets for reducing London's CO2 emissions and the London 2012 Olympic bid – and subsequently helped to write the sustainability strategy One Planet Olympics.

### SPEAKING

#### 0900 THURSDAY

STRUCTURING  
COLLABORATION: Mergers,  
partnerships and new  
business models

See page 14



## CALLUM ROBERTS

Professor

University of York

Callum Roberts is professor of marine conservation at the University of York in England. His research focuses on threats to marine ecosystems and species, and on finding the means to protect them. His latest book, *The Unnatural History of the Sea*, charts the effects of 1000 years of exploitation on ocean life.

### SPEAKING

#### 1400 THURSDAY

OCEANS IN PERIL: Catalysing  
international collaboration

See page 18



## HAROLD ROSEN

Executive Director

Grassroots Business  
Fund

Harold Rosen is Executive Director of the Grassroots Business Fund. Harold spent 30 years managing IFC's emerging markets investments and leading IFC into new geographic areas and sectors, such as microfinance, technical assistance and SMEs. He founded the World Bank's group SME department, and then spun this off into Grassroots Business Fund, an independent organisation funded by IFC and a number of others.

### SPEAKING

#### 0900 FRIDAY

TAPPING INTO SOCIAL  
FINANCE FOR GROWTH: A  
clinic for practitioners

See page 23

# SPEAKERS

## BIOGRAPHIES



### ARUNA ROY

Activist

Mazdoor Kisan Shakti Sangathan

Aruna Roy began work as a civil servant. In 1975, she resigned to join the Social Work and Research Centre. In 1987, along with Shanker Singh, and Nikhil Dey, she helped form MKSS - a grassroots peasants and workers organisation, credited for founding India's Right to Information movement. As a member of the central government's National Advisory Council from 2004-2006, she played a key role in incorporating strong citizens entitlements in the Right to Information and National Rural Employment Guarantee Acts.

#### SPEAKING

1430 FRIDAY

CLOSING PLENARY

See page 26



### JESS SEARCH

CEO

Channel 4 BRITDOC Foundation

Jess Search is the Chief Executive of the Channel4 BRITDOC Foundation (britdoc.org), the organisation behind the Good Pitch. The Foundation is five years old and has supported over 50 films including last year's Sundance double winner Afghan Star, Grierson winner Here's Johnny and BAFTA winner Chosen. Previously, Jess was a Channel 4 commissioning editor for five years. She is currently doing a part-time MBA.

#### SPEAKING

1400 THURSDAY

COMPELLING ACTION: Social change media in the age of information overload

See page 18



### MINOUCHE SHAFIK

Permanent Secretary

DFID

Nemat (Minouche) Shafik is Permanent Secretary for the Department for International Development (DFID). She joined DFID in 2004 as DG for all country programmes. Previously, Minouche served as Vice President, Private Sector and Infrastructure, at the World Bank and in the senior management group of the IFC. She also taught at the Wharton Business School and at Georgetown University. She has a B.A. in Economics & Politics, an M.Sc. in Economics and a D.Phil. in Economics. She is married, has two children and three stepchildren.

#### SPEAKING

1400 THURSDAY

AID AGENCIES AND SOCIAL ENTREPRENEURS: Natural allies, new bridges

See page 18



### PREMAL SHAH

President

Kiva

Premal Shah helps lead Kiva. Kiva raises over \$1 million each week for the working poor and was named as a Top 50 website by TIME magazine in 2009. Prior to Kiva, Premal spent six years at PayPal and started his career as a management consultant. Premal's honours include being named to Fortune magazine's 40 under 40 list and his speaking engagements include the Clinton Global Initiative. Premal graduated from Stanford University.

#### SPEAKING

1400 THURSDAY

COMPELLING ACTION: Social change media in the age of information overload

See page 18



## SHANKAR SINGH

Activist

Mazdoor Kisan Shakti Sangathan

Shanker Singh, aged 55, is one of the founder members of the MKSS along with Aruna Roy and Nikhil Dey. Acknowledged to be one of India's leading figures in people's theatre, he has combined over two decades of activism with the power of people's communication through street theatre, puppetry, song, and drama to strengthen the voice of the poor. Through his uncanny, incisive wit and his keen political insight, he instinctively communicates complex issues in an idiom familiar to the people.

### SPEAKING

**1430 FRIDAY**  
CLOSING PLENARY

See page 26



## MAI SIRIPHONGPHANH

Chief People Officer & COO

Digital Divide Data

Mai Siriphongphanh received her MBA from the Australian Graduate School of Entrepreneurship in 2002. In 2004 she participated in the Global Social Benefit Incubator Program. In 2008, she received the Skoll Foundation Award for Social Entrepreneurship. When joining DDD, Mai took the spirit of leadership, refining its social enterprise model, focusing on human development and re-innovating it as a mechanism for training a new generation of leaders.

### SPEAKING

**1400 THURSDAY**  
LOCAL TALENT ON A GLOBAL SCALE: HR strategies for sustainability

See page 19



## JEFF SKOLL

Founder & Chairman

Skoll Foundation, Participant Media, and Skoll Global Threats Fund

Jeff Skoll is a philanthropist and social entrepreneur. As founder and chairman of the Skoll Foundation, Participant Media and the Skoll Global Threats Fund, he is bringing life to his vision of a sustainable, peaceful and prosperous world. Jeff received a Bachelor's in Electrical Engineering from the University of Toronto and an MBA from the Stanford Graduate School of Business. He served as the first President of eBay, developing the company's inaugural business plan and leading its successful initial public offering.

### SPEAKING

**1700 WEDNESDAY**  
OPENING PLENARY

See page 13



## TIM SMIT

Chief Executive & Co-Founder

Eden Project

Tim Smit, CBE, is Chief Executive and co-founder of the Eden Project in Cornwall. The Eden Project houses a complex of domes containing world-class horticulture, and demonstrates that sustainability is about good business practice and the citizenship values of the future. Tim is Director of the Lost Gardens of Heligan and has Honorary Doctorates and Fellowships from a number of universities. He has received The Royal Society of Arts Albert Medal and was voted 'Great Briton of 2007' in the Environment category of the Morgan Stanley Great Briton Awards.

### SPEAKING

**1430 FRIDAY**  
CLOSING PLENARY

See page 26

# SPEAKERS

## BIOGRAPHIES



**MARK SMOLINSKI**  
Director, Global Health  
Google.org

Dr. Mark Smolinski is a global leader on disease surveillance. In 2003, Mark led the development of a regional surveillance system linking Israel, Jordan, and the Palestinian Authority. Similarly, he has worked to improve regional collaborations in SE Asia, Africa, and Russia. Mark was the study director for the U.S. Institute of Medicine's landmark report, Microbial Threats to Health: Emergence, Detection, and Response.

### SPEAKING

**1100 FRIDAY**  
CANARY IN THE COAL MINE: H1N1 and global threat preparedness in the 21st century

See page 24



**LURIE SPENGLER**  
President & CEO  
ShoreBank  
International Ltd

Laurie J. Spengler, President and CEO of ShoreBank International, has over 20 years of experience as a strategy and transaction services professional. Her interests are focused on supply and demand-side solutions to extend access to capital to individuals, small businesses and low income households through the delivery of financial resources, business solutions and professional support.

### SPEAKING

**1100 FRIDAY**  
THE COLOURS OF MONEY: Social financiers collaborating for impact

See page 24



**RAY SUAREZ**  
Senior  
Correspondent  
PBS Newshour

Ray Suarez has been a journalist for more than 30 years. He is currently a Senior Correspondent for the PBS Newshour, following a long stint at National Public Radio, where he was host of Talk of the Nation. He is the author of The Holy Vote: The Politics of Faith in America, and The Old Neighborhood: What We Lost in the Great Suburban Migration. His writing has been part of many other books including How I Learned English, Brooklyn: A State of Mind, Saving America's Treasures, and the upcoming What We See: Advancing the Observations of Jane Jacobs.

### SPEAKING

**1400 THURSDAY**  
WHEN DISASTER STRIKES: Social entrepreneurs managing through crisis

See page 19



**ILSE TREURNICHT**  
CEO  
MaRS Discovery  
District, Toronto

Ilse Treurnicht is CEO, MaRS Discovery District, a leading innovation centre that offers entrepreneurship and innovation programmes to emerging companies in Ontario in the life sciences, ICT, clean tech and social innovation sectors. Ilse is an active member of Canada's innovation community. She lead Primaxis, an early-stage VC fund and has served on private company boards, industry associations, research organisations and several government advisory panels. Ilse holds a DPhil in chemistry from Oxford University, which she attended as a Rhodes Scholar.

### SPEAKING

**0900 FRIDAY**  
GOVERNMENTS AND SOCIAL ENTREPRENEURS: Partnership versus subcontracting

See page 22



## MABEL VAN ORANJE

CEO

The Elders

Mabel van Oranje is the Chief Executive Officer of The Elders ([www.theElders.org](http://www.theElders.org)). She is also a founder and co-chair of the European Council on Foreign Relations ([www.ecfr.eu](http://www.ecfr.eu)). Previously, Mabel was International Advocacy Director (2003-2008) and Brussels' Office Director (1997-2003) of the Open Society Institute. She holds master's degrees in Economics and in Political Sciences. In 2005, the World Economic Forum named her one of its Young Global Leaders.

### SPEAKING

#### 0900 THURSDAY

PEACE BUILDING AND CONFLICT: The role for social entrepreneurs

See page 14



## ADALBERTO VERISSIMO

Senior Research & Co-Founder

Imazon

Adalberto Verissimo is a senior researcher and co-founder of the Amazon Institute of People and Environment (Imazon), a think-and-do tank based in the Brazilian Amazon. He holds a master's degree in Ecology from the Pennsylvania State University and a graduate degree in Agricultural Engineering from the Federal Rural University of the Brazilian Amazon. He has published more than 120 scientific articles and 16 books on conservation and natural resources management. Verissimo is also an AVINA Fellow and an Ashoka Senior Fellow.

### SPEAKING

#### 0900 FRIDAY

DONOR COLLABORATION FOR ISSUE LEVEL IMPACT

See page 22



## ALBERTO VOLLMER

Chairman & CEO

CA Ron Santa Teresa

Alberto C. Vollmer is Chairman and CEO of Rum Santa Teresa, Venezuela's leading premium rum manufacturer. Formerly he was export manager and later led the turnaround of the company. Since 2000, he has managed land invasions, seizures and community leadership in a politically challenging environment. In 2003 he founded Project Alcatraz, a reinsertion program for criminals and has consulted on reinsertion of violent individuals both in Colombia and in El Salvador.

### SPEAKING

#### 0900 THURSDAY

BEYOND THE SINGLE BOTTOM LINE: Pioneers in blended value

See page 14



## DR. MARTÍN VON HILDEBRAND

Director

Fundación Gaia Amazonas

Dr. Martín Von Hildebrand has been contributing to the recognition of indigenous rights and the protection of the Amazon region since 1970. He has received several national and international awards including the Right Livelihood Award, National Environmental Prize, Order of the Golden Ark, Skoll Award for Social Entrepreneurship and Latin-American Social Entrepreneur (WEF, 2009). He has a Doctorate in Ethnology from the Sorbonne, Paris.

### SPEAKING

#### 0900 FRIDAY

DONOR COLLABORATION FOR ISSUE LEVEL IMPACT

See page 22

# SPEAKERS

## BIOGRAPHIES



### HERTA VON STIEGEL

**Executive Chairman**  
**Ariya Capital**

Herta von Stiegel, J.D., is Executive Chairman of Ariya Capital, a Botswana- and London-based private equity firm focusing on sustainable investments in Africa. An international executive with a consistent track record of building profitable businesses, she held senior positions at Citibank and JP Morgan and, until 2005 was Managing Director at AIG Financial Products.

#### SPEAKING

**1100 THURSDAY**  
**SOCIAL GOOD WITH MARKET RETURNS?** Investors and entrepreneurs are having it both ways

See page 16



### DIANA WELLS

**President**  
**Ashoka**

Dr. Diana Wells, President of Ashoka, joined the organisation in the 1980s after graduating from Brown University with a degree in South Asian Studies. After taking a leave to pursue a Ph.D. in anthropology, Diana returned to Ashoka to provide leadership for the worldwide process of sourcing and selecting leading social entrepreneurs. She has contributed to the field of social entrepreneurship by implementing a widely respected tool for Measuring Effectiveness.

#### SPEAKING

**1100 FRIDAY**  
**COLLABORATIVE LEADERSHIP:** A practical toolkit

See page 25



### GARY WHITE

**Executive Director**  
**Water.org**

Gary White is executive director and co-founder of Water.org. His entrepreneurial vision has driven innovations in the way water and sanitation projects are delivered and financed, and these innovations now serve as a model in the sector. White is a founding board member of the Millennium Water Alliance and Water Advocates, a fellow of the British American Project, a member of the Philanthropy World Hall of Fame, and a Skoll social entrepreneur.

#### SPEAKING

**0900 THURSDAY**  
**STRUCTURING**  
**COLLABORATION:** Mergers, partnerships and new business models

See page 14

**1100 THURSDAY**  
**WATER SCARCITY AND THE**  
**HUMAN RIGHT TO WATER**

See page 16



### JURIE WILLEMSE

**Managing Director**  
**GroFin**

Jurie Willemse is the Managing Director of GroFin, the multi-national specialist SME finance and development company that offers an innovative combination of risk capital and business development assistance to viable enterprises. He developed several successful businesses over a period of twenty years before establishing GroFin in 2004.

#### SPEAKING

**0900 FRIDAY**  
**TAPPING INTO SOCIAL**  
**FINANCE FOR GROWTH:** A clinic for practitioners

See page 23






---

## **LIU YAN**

**CEO & Co-Founder  
Xindanwei**

---

Liu Yan is the CEO and event curator of Xindanwei, the first collaborative workspace and community for creatives and start ups in China. Since 2004, she has been advocating cross-culture and inter-disciplinary connection and collaboration between Europe and China through events like PICNIC and Dutch Electronic Arts Festival (DEAF). She is also the chairwoman of 3S ReUnion in Shanghai, an event for people from arts, technology and academic fields to meet and share their knowledge.

---

### **SPEAKING**

**1100 FRIDAY**  
REIMAGINING NETWORKS  
FOR INNOVATION AND IMPACT

---

See page 24




---

## **JOHN YDSTIE**

**Economic  
Correspondent**

---

**National Public Radio,  
USA**

---

John Ydstie has covered the economy, Wall Street and the federal budget for NPR for two decades and has worked at NPR since 1979. In recent years NPR has broadened his responsibilities, making use of his reporting and interviewing skills to cover major stories like the aftermath of 9/11, Hurricane Katrina and the Jack Abramoff lobbying scandal. His current focus is reporting on the global financial crisis. Ydstie is also a regular guest host on the NPR news programmes Morning Edition, All Things Considered, Weekend Edition and Talk of the Nation.

---

### **SPEAKING**

**1700 WEDNESDAY**  
OPENING PLENARY

---

See page 13

---

# DELEGATES

## A-C

### NAME, JOB TITLE, ORGANISATION

## A

<b>Helmy Abouleish</b> , Managing Director, SEKEM Group
<b>Karabi Acharya</b> , Change Leader, Ashoka
<b>Joel Ackerman</b> , Board Chair, One Acre Fund
<b>Sundeep Ahuja</b> , Co-Founder, The Extraordinaries
<b>Waleed Al Banawi</b> , Regional Chairman, (MENA) Young Presidents' Organization(YPO)
<b>Yvette Alberdingk Thijm</b> , Executive Director, Witness
<b>Jeremy Alberga</b> , Chief Operating Officer, Global Viral Forecasting Initiative
<b>Darr Aley</b> , Co-Founder, Moms & Jobs
<b>April Allderice</b> , CEO, MicroEnergy Credits
<b>Ryan Allis</b> , CEO, iContact Corp
<b>Kim Alter</b> , Visiting Fellow, Skoll Centre
<b>Santiago Alvarez Patron</b> , MBA Student - Founder, Saïd Business School - Prosperitas MFI
<b>Philip Angier</b> , Chair, CapitalISE
<b>Jennfier Anopolsky</b> , SVP, Corporate Responsibility The Walt Disney Company
<b>Lorene Arey</b> , President, The Clara Fund
<b>Jennifer Arnold</b> , Director/Producer, Harambee Media
<b>Mark Asseily</b> , Co-Founder and CEO, EqualMedia
<b>Melody Atil</b> , Founder/Managing Partner, Peace Dividend
<b>Steve Atkins</b> , Financial Consultant, Consultant; BI Norwegian School of Management
<b>Philip Auerswald</b> , Editor, Innovations journal
<b>Byron Auguste</b> , Director, Social Sector Office, McKinsey & Company Inc.
<b>Grace Augustine</b> , MSc Student, Saïd Business School

## B

<b>Paul Baan</b> , Chairman of the Board, Noaber Foundation
<b>Vijay Babu</b> , CEO, Vortex Engineering Pvt Ltd
<b>Rodrigo Baggio</b> , Executive Director, CDI
<b>Quratulain Bakhteari</b> , Founding Director, Institute for Development Studies and Practices
<b>Dr. Vivian Balakrishnan</b> , Minister of Community Development, Youth and Sports Singapore
<b>Leann Bankoski</b> , Program Coordinator, Carolina for Kibera
<b>Tony Barclay</b> , Founder & President, Development Practitioners Forum
<b>Allan Barkat</b> , CEO, Dualis- Social Venture Fund
<b>Mike Barry</b> , Head of Sustainable Business, Marks & Spencer
<b>Dipak Basu</b> , Chairman and President, Anudip Foundation
<b>Elmira Bayrasli</b> , Vice President, Policy & Outreach Endeavor
<b>Jonathan Bays</b> , Consultant, McKinsey & Company

### NAME, JOB TITLE, ORGANISATION

<b>Betsy Beaumon</b> , VP/GM, Literacy Programs Benetech
<b>John Bell</b> , Vice President, YouthBuild USA
<b>Dr Carlo Bellini</b> , Co-Chair, Oxford Healthcare Business Network University of Oxford
<b>Federico Bellone</b> , Amazon Program Manager, Fundación AVINA
<b>Jackie Bennion</b> , Senior Interactive Producer, Frontline/world
<b>Jim Berk</b> , CEO, Participant Media
<b>Jane Berk</b> , Advisor, Participant Media
<b>Seth Berkley</b> , President & CEO, International AIDS Vaccine Initiative
<b>Eric Berkowitz</b> , CIO, Bamboo Finance
<b>Paul Bernstein</b> , Managing Director, Absolute Return for Kids
<b>Luis Berruete</b> , Member of the Board, Creas
<b>Claudio Bertuccioli</b> , Life-Sciences Investor
<b>Mitch Besser</b> , Medical Director, Founder, mothers2mothers
<b>Suzanne Biegel</b> , Founder, Catalyst At Large
<b>Jeroo Billimoria</b> , Executive Director, Aflatoun, Child Savings International
<b>Ron Bills</b> , Chairman & CEO, Envirofit Intenational
<b>Ben Binswanger</b> , Vice President, Program & Impact, Skoll Foundation
<b>Brizio Biondi-Morra</b> , President, AVINA
<b>Amy Black</b> , Vice President, Growth Strategy and Development, Teach For All
<b>Liam Black</b> , Co-Founder, Wavelength
<b>Renata Black</b> , Director, 7Bar Foundation
<b>Anna Blackman</b> , Skoll Scholar PhotoVoice
<b>Kipper Blakeley</b> , Partner, Blatter+Frick, Social Investors Services
<b>Taddy Blecher</b> , Chief Executive, Community Individual Development Assoc'n (C.I.D.A.)
<b>Sandra Blevins</b> , Managing Partner, The Brand Collaborative
<b>Rick Blickstead</b> , CEO, Wellesley Institute
<b>Zack Bluestone</b> , MBA Candidate, Skoll Associate Saïd Business School
<b>Ron Boehm</b> , Principal, Boehm Gladen Foundation
<b>Brittany Boettcher</b> , Program Assistant, Skoll Foundation
<b>David Bonbright</b> , Chief Executive, Keystone Accountability
<b>Yann Borgstedt</b> , President, WomenChangeMakers
<b>David Bornstein</b> , Chief Storyteller, Dowser Media
<b>Jacqueline Bosnjak</b> , Founder/New Media, IDEALOGUE
<b>Amit Bouri</b> , Director of Strategy & Development, Global Impact Investing Network
<b>Jenny Bowen</b> , Founder & Executive Director, Half the Sky Foundation
<b>Jon Bowermaster</b> , Writer & Filmmaker, Oceans 8 Films
<b>Lakhdar Brahimi</b> , Veteran United Nations Envoy and Advisor, Former Foreign Minister to Algeria
<b>Kevin Braithwaite</b> , Director/Co-founder, RootSpace
<b>Steve Bratt</b> , Chief Executive Officer, World Wide Web Foundation
<b>Paul Braund</b> , Executive Director, RIOS Institute

## NAME, JOB TITLE, ORGANISATION

<b>Stephan Breidenbach</b> , Co-Founder, betterplace.org
<b>Girija Brilliant</b> , Board Spouse, Skoll Global Threats Fund
<b>Larry Brilliant</b> , President, Skoll Global Threats Fund
<b>Joe Brilliant</b> , New Media Consultant, Participant Media/TakePart.com
<b>Jon Brilliant</b> , China Fulbright Scholar, Seva Foundation
<b>Gabriel Brodbar</b> , Founding Director, NYU Reynolds Program in Social Entrepreneurship
<b>John Brodhead</b> , Vice President, Strategy and Communications, Metrolinx
<b>Liam Brody</b> , Senior VP of Business Developmnt & Corp. Relations, Root Capital
<b>Gidon Bromberg</b> , Israeli Director, EcoPeace
<b>Jon Brooks</b> , Managing Director, The Big Give
<b>Anna Brosnan</b> , COO, Small Foundation
<b>Charlie Brown</b> , Executive Director, Ashoka Changemakers
<b>Albert Bruno</b> , Co-founder and Academic Dean GSBI, Santa Clara University
<b>Gib Bulloch</b> , Executive Director of ADP, Accenture
<b>Susan Burns</b> , Chief Executive Officer, Global Footprint Network
<b>Martin Burt</b> , General Manager, Fundacion Paraguaya
<b>Caroline Butler</b> , Director, Lord North Street Limited
<b>Lee Bycel</b> , ED, Redford Center

## C

<b>Sarah Caddick</b> , Principal Advisor, Neuroscience, Gatsby Charitable Foundation
<b>Emma Caddy</b> , ERM, Director, ERM Foundation
<b>Gillian Caldwell</b> , Campaign Director, 1 Sky
<b>Laura Callanan</b> , Consultant, McKinsey & Company Inc.
<b>Mildred Callear</b> , EVP/Board Member, Small Enterprise Assistance Funds (SEAF)
<b>Mark Campanale</b> , Advisor, Halloran Philanthropies
<b>Philip Campbell</b> , Editor-in-Chief, Nature
<b>Andrea Carati</b> , Director, MainStreet Partners
<b>Tania Carnegie</b> , National Director of Community Leadership, KPMG
<b>Chris Carr</b> , Director, Equity Plus Limited
<b>Caroline Casey</b> , Founder & CEO, Kanchi
<b>Andrea Cavanna</b> , Investment Manager, Oltre Venture
<b>Mariano Cenamo</b> , Executive Secretary, Idesam
<b>Stephan Chambers</b> , Chairman of the Skoll Centre Standing Committee, Skoll Centre
<b>Victor Chan</b> , Founding Director, Dalai Lama Center for Peace and Education
<b>Dweep Chanana</b> , Director, UBS
<b>Alan Chang</b> , Managing Director, Capricorn Investment Group, LLC
<b>Ammar Charani</b> , Chief Poiuneer, The County of PoiU
<b>Kylie Charlton</b> , Managing Director, Unitus Capital

## NAME, JOB TITLE, ORGANISATION

<b>Abrar Chaudhury</b> , Skoll Associate, University of Oxford
<b>David Chen</b> , Principal, Equilibrium Capital Group
<b>Ms. Weiwen Chen</b> , Assistant Manager, Social Enterprise, Ministry of Community Development, Youth & Sports
<b>Sheryl Chen</b> , Associate, Economic Development Board
<b>Mark Cheng</b> , Director, Solar For All
<b>Paul Cheng</b> , Investment Manager, Venturesome
<b>Willie Cheng</b> , Chairman, Lien Centre for Social Innovation
<b>Michael Chertok</b> , VP Global Impact, Digital Divide Data
<b>Emily Chew</b> , MBA Student, Said Business School
<b>Mr. Suee Chieh Tan</b> , Chief Executive, NTUC Income
<b>Leila Chirayath Janah</b> , CEO, Samasource
<b>Mrs. Lee See Choo</b> , Director, ComCare and Social Support Division, Ministry of Community Development, Youth & Sports
<b>Soonok Chun</b> , Director, SPARK
<b>Catherine Clark</b> , Adjunct Asst. Professor, CASE at Duke
<b>Jason Clark</b> , Social Edge Web Manager, Skoll Foundation
<b>Kelly Clark</b> , Managing Director, Marmanie Consulting Ltd.
<b>Rachael Clay</b> , Director, Ethicore
<b>Linda Coady</b> , Director, Forest Trends
<b>Linda Codron</b> , Communication Manager, mothers2mothers
<b>Gary Cohen</b> , President, Health Care Without Harm
<b>June Cohen</b> , Executive Producer, TED Media
<b>Vicky Colbert</b> , Founder and Executive Director, Fundación Escuela Nueva
<b>Andrea Coleman</b> , CEO, Riders for Health
<b>Barry Coleman</b> , Executive Director, Riders for Health
<b>Marilyn Collette</b> , Senior Associate, Canada Gold
<b>Susan Collin Marks</b> , Snr VP, Search for Common Ground
<b>Steve Collins</b> , Director, Valid International/Valid Nutrition
<b>Phil Collis</b> , Creative Manager, Skoll Foundation
<b>Vera Cordeiro</b> , CEO, Associação Saúde Criança
<b>Silvia Cornacchia</b> , Investments Director, SIDI
<b>Ann Cotton</b> , Executive Director, Camfed International
<b>Sean Coughlan</b> , Chief Executive, Social Entrepreneurs Ireland
<b>Brian Cox</b> , President, MFX Solutions
<b>Christophe Cox</b> , CEO, APOPO
<b>Ziba Cranmer</b> , Director of Social Innovation, Nike, Inc.
<b>Kelly Creeden</b> , Sr. Marketing Program Manager, Skoll Foundation
<b>Daniel Crisafulli</b> , Director, Investments and Partnerships, Skoll Foundation
<b>Lance Croffoot-Suede</b> , Partner, Linklaters LLP
<b>Katy Cronin</b> , Communications Director, The Elders

# D-H DELEGATES

## NAME, JOB TITLE, ORGANISATION

### D

<b>Darlene Daggett</b> , Founder and Executive Director, Ikatu International
<b>Ophelia Dahl</b> , Executive Director, Partners In Health
<b>Paul Dale</b> , Managing Director, Voxtra
<b>Victor d'Allant</b> , Executive Director, Social Edge, Skoll Foundation
<b>Kimberly Dasher Tripp</b> , Program Officer, Skoll Foundation
<b>Mauricio Davila</b> , Institutional Development Director, CDI
<b>Christopher Davis</b> , Director International Campaigns, The Body Shop International
<b>Marc Davis</b> , Chief Scientist & Co-Founder, Invention Arts
<b>Jenny Davis-Peccoud</b> , Director, Global Social Impact, Bain & Company
<b>Peter Dayan</b> , Professor, University College London
<b>Francois de Borchgrave</b> , Managing Director, Kois Invest
<b>Olivier de Guerre</b> , Chairman, PhiTrust
<b>Fred de Sam Lazaro</b> , Correspondent & Director, PBS NewsHour
<b>Jean-Philippe De Schrevel</b> , Founder, Blue Orchard
<b>Pierre Paul De Schrevel</b> , Managing Director, Degroof Bank
<b>Kriss Deiglmeier</b> , Executive Director, Stanford GSB - Center for Social Innovation
<b>Linda DeMartini</b> , Guest, Skoll Foundation
<b>Jim DeMartini, III</b> , Managing Partner, Seiler LLP
<b>Ron Dembo</b> , Founder and CEO, Zerofootprint
<b>Basil Demeroutis</b> , Partner, Capricorn Investment Group, LLC
<b>Donnie Demers</b> , Composer/Lyricist, Musical Wheels Music
<b>Jimmy Demers</b> , Musical Wheels Music
<b>Laurent Demuyneck</b> , Director, Rwanda Ventures
<b>Lyn Denend</b> , Case Writer, Stanford Business School
<b>Pooran Desai</b> , Co-Founder, BioRegional Development Group
<b>Nikhil Dey</b> , Activist, Mazdoor Kisan Shakti Sangathan (MKSS)
<b>Harpreet Dhody</b> , Student at SBS, Skoll Associate at Skoll Centre
<b>Edward Diener</b> , Counsel, Skoll Foundation
<b>Markus Dietrich</b> , Director, Asian Social Enterprise Incubator
<b>Paddy Docherty</b> , Chief Executive, Phoenix Africa Development Company Ltd
<b>Catherine Dolan</b> , Lecturer, Saïd Business School
<b>Lorna Donaldson</b> , Marketing Specialist, Skoll Foundation
<b>Lukas Dopstadt</b> , Founder, Managing Director, Social Value GmbH für eine bessere Gesellschaft
<b>Louis Dorval</b> , Student, Skoll Scholar, Saïd Business School
<b>Karen Doyle Grossman</b> , VP, Social Innovations, Mercy Corps
<b>Tim, Draimin</b> , Executive Director, Social Innovation Generation (SiG)
<b>William Drayton</b> , CEO, Ashoka
<b>William Drenttel</b> , Editorial Director, Design Observer Group
<b>Steven Drummond</b> , Senior National Editor, National Public Radio

## NAME, JOB TITLE, ORGANISATION

<b>Sandi DuBowski</b> , Director, Films That Change The World
<b>Annika Dubrall</b> , MBA Student, Saïd Business School
<b>Connie Duckworth</b> , Founder and CEO, ARZU, Inc.
<b>Samar Dudin</b> , Regional Director, Ruwwad
<b>Neill Duffy</b> , Chairman, Tribe Management
<b>Debra Dunn</b> , Assoc. Professor/Advisor to Entrepreneurs, Stanford University
<b>Bill Duryea</b> , National Editor, St. Petersburg Times
<b>Jesse Dylan</b> , Director, FreeForm Media

### E

<b>Jake Eberts</b> , Independent Producer
<b>Toby Eccles</b> , Development Director, Social Finance
<b>Michael Eckhart</b> , President, American Council on Renewable Energy
<b>Jordyan Edmiston</b> , Social Entrepreneur, MBA Candidate, Saïd Business School
<b>Christine Eibs Singer</b> , CEO, E+Co
<b>Donia El Sadat</b> , Program Officer, El Sadat Association
<b>Zohre Elahian</b> , Managing Director, Global Catalyst Foundation
<b>James Elbaor</b> , Co-Founder and Executive Director, KR Student Loans
<b>Sally ElBaz</b> , Media and International Relations Office, El Sadat Association for Social Development
<b>John Elkington</b> , Founder/Executive Chairman, Volans
<b>Paul Ellingstad</b> , Director, Office of Social Innovation, Hewlett Packard
<b>David Elliot</b> , Senior Advisor, Global Development Alliances, Development Alternatives/USAID Contractor
<b>Mona Eltahawy</b> , Columnist & Public Speaker, <a href="http://www.monaeltahawy.com">www.monaeltahawy.com</a>
<b>Eve Ensler</b> , Playwright & Founder, V-Day
<b>Ina Epkenhans</b> , Director, PHINEO
<b>Kjerstin Erickson</b> , CEO, FORGE
<b>Alexis Ettinger</b> , Head of Marketing and Strategy, Skoll Center
<b>Tejas Ewing</b> , Carbon Markets Coordinator, New Economics Foundation

### F

<b>Richard Fahey</b> , Chief Operating Officer, Skoll Foundation
<b>Jason Fairbourne</b> , Business Solutions Director / CEO, BYU / FS Consulting
<b>Abby Falik</b> , Founder/CEO, Global Citizen Year
<b>Annie Falk</b> , Business Development Manager, Community Individual Development Assoc' (C.I.D.A.)
<b>Gene Falk</b> , Co-Founder & President, mothers2mothers
<b>Paul Farmer</b> , Co-Founder, Partners In Health

## NAME, JOB TITLE, ORGANISATION

<b>Terry Farris</b> , CEO, Unitus Capital
<b>Kristin Feeley</b> , Manager, Sundance Documentary Film Program
<b>Naoko Felder-Kuzu</b> , Advocacy Director, Soential
<b>Kelly Fidrck</b> , Assistant, Musical Wheels Music
<b>Jill Finlayson</b> , Web Marketing Manager, Social Edge, Skoll Foundation
<b>Patricia Finneran</b> , Managing Producer, Sundance Institute Documentary Film Program
<b>Martin Fisher</b> , Co-Founder & CEO, KickStart International
<b>Eugenie Fitzgerald</b> , Alumni Skollar; Fellow, CFED, Independant consultant
<b>Matt Flannery</b> , CEO, Kiva
<b>Ma. Cecilia Flores-Oebanda</b> , Founder and President, Visayan Forum Foundation, Inc.
<b>William Foote</b> , President & Founder, Root Capital
<b>Dr. Lani Fraizer</b> , Executive Director, Synergies in Sync
<b>Chris Fralic</b> , Partner, First Round Capital
<b>Ambassador Elizabeth Frawley Bagley</b> , Special Representative for Global Partnerships, Office of Secretary of State
<b>Susana Frazao Pinheiro</b> , Alumni Scholar and Founder and UNDP Consultant, Local InSight
<b>Marc Freedman</b> , Founder & CEO, Civic Ventures
<b>Bob Freling</b> , Executive Director, Solar Electric Light Fund
<b>Chris Frith</b> , Emeritus Professor of Neuropsychology, University College London
<b>Jim Fruchterman</b> , President & CEO, Benetech Initiative
<b>Michele Fugiel Gartner</b> , Executive Director, Social Venture Partners Calgary
<b>Minou Fuglesang</b> , Founder and Executive Director, Femina HIP multimedia
<b>Katherine Fulton</b> , President, Monitor Institute
<b>Mark Fulton</b> , Global Head of Climate Change Investment Research, Deutsche Bank

## G

<b>DongYu Gan</b> , Secretary General, China Social Entrepreneur Foundation
<b>Rodrigo Garay</b> , Founder & Executive Director, AIDS Accountability International
<b>Vivian Gee</b> , Head of Asia, Schwab Foundation for Social Entrepreneurship
<b>Christie George</b> , Entrepreneur/Skoll Scholar, LoudSauce
<b>Stephen George</b> , Chief Investment Officer, Capricorn Investment Group, LLC
<b>Michele Giddens</b> , Executive Director, Bridges Ventures
<b>Daniel Gill</b> , Director of Social Impact, Dragon School
<b>Gannon Gillespie</b> , Director of US Operations, Tostan
<b>Scott Gilmore</b> , Executive Director, Peace Dividend Trust
<b>Bruno Giussani</b> , European Director, TED Conferences
<b>Peter Gleick</b> , President, Pacific Institute
<b>Ian Goldin</b> , Director, James Martin 21st Century School
<b>Sam Goldman</b> , CEO, D.light Design
<b>Stephen Goldsmith</b> , Professor, Harvard Kennedy School

## NAME, JOB TITLE, ORGANISATION

<b>John Gomperts</b> , President, Civic Ventures
<b>Henry Gonzalez</b> , Vice President, Emerging Markets & Microfinance, Morgan Stanley
<b>Diana Good</b> , Partner, Linklaters LLP
<b>Arun Gore</b> , Managing Director, Gray Ghost Ventures
<b>Stephen Gotz</b> , Development Manager, CNGI/Rosetta Foundation
<b>David Grayson</b> , Professor, The Doughty Centre for Corporate Responsibility
<b>David Green</b> , Vice President, Ashoka
<b>Jim Greenbaum</b> , Founder & Managing Director, The Greenbaum Foundation
<b>Ellen Gustafson</b> , Co-Founder, FEED Projects, LLC
<b>Fritz Gutbrodt</b> , Director Credit Suisse Foundation, Credit Suisse Group AG

## H

<b>Phillip Haid</b> , CEO, Public Inc.
<b>Victoria Hale</b> , Founder and CEO, Medicines360
<b>Alvin Hall</b> , Broadcaster, Author, and President, Cooperhall Press Inc.
<b>Jim Hall</b> , President/ CEO, Versa Ventures
<b>Darell Hammond</b> , CEO and Co-Founder, KaBOOM!
<b>Jost Hamschmidt</b> , Managing Director, Oikos Foundation
<b>Dean Hand</b> , CEO, GreaterCapital
<b>Mike Hands</b> , Founder / Trustee, Inga Foundation
<b>Sjoerd Hannema</b> , CEO, Adlens Ltd./Adaptive Eyewear
<b>Kathryn Hanson</b> , CEO & Founder, ALearn
<b>Kirk Hanson</b> , Executive Director, Santa Clara University
<b>Pamela Hartigan</b> , Director, Skoll Centre for Social Entrepreneurship
<b>Jörg Hartmann</b> , Executive Director, GTZ
<b>Caroline Hartnell</b> , Editor, Alliance magazine
<b>Asher Hasan MD</b> , Founder/CEO, NAYA JEEVAN
<b>David Haskell</b> , President & CEO, Dreams InDeed International
<b>Tom Haslett</b> , CEO, Seven Seas Capital Mgt.
<b>Laura Hattendorf</b> , Portfolio Director, Mulago Foundation
<b>Paul Hawken</b> , CEO, OneSun Solar
<b>Michael Hay</b> , Professor, London Business School
<b>Carolyn Hayman</b> , Chief Executive, Peace Direct
<b>Nicolas Hazard</b> , Chief Advisor, Groupe SOS
<b>Libby Heimark</b> , Board Director, Free the Children
<b>Andreas Heinecke</b> , CEO and Founder, Dialogue Social Enterprise GmbH
<b>Peter Heller</b> , Founder, Canopus Foundation
<b>Brigit Helms</b> , CEO, Unitus
<b>Anne Henricot</b> , Executive Director, Philippson Foundation

# DELEGATES

## NAME, JOB TITLE, ORGANISATION

**Jason Henzell**, Founder & Director, Breds/The Treasure Beach Foundation

**Maria Hermoso**, Director, Only the Brave Foundation

**Peter Hero**, VP Institute Relations, Caltech

**Dr Anna Herrhausen**, Allianz4Good, Allianz SE

**Amy Herskovitz**, Executive Director, The Pershing Square Foundation

**Sandy Herz**, Director, Film & Broadcast Partnerships, Skoll Foundation

**Allyson Hewitt**, Director, Social Entrepreneurship, MaRS

**David Heymann**, Chairman, Health Protection Agency, UK

**Pippa Hichens**, Event Coordinator, Skoll Centre

**Angela Hilmi**, Director, CERAI

**Jerry Hirsch**, Chairman, Lodestar Foundation

**Jeremy Hockenstein**, CEO & Co-Founder, Digital Divide Data

**Peter Holbrook**, Chief Executive, Social Enterprise Coalition

**Chloe Holderness**, Managing Director, Lex Mundi Pro Bono Foundation

**Deborah Holmes**, Global Director, Corporate Responsibility, Ernst & Young LLP

**Jennifer Holt**, Deputy Director, Peace Dividend Trust

**Sean Holt**, Managing Partner, Om Ventures

**Jim Hornthal**, Partner, CMEA Capital

**York Hosak**, Partner, Hosak & Partner

**David How**, CEO Oasis Transformation Ltd, B'desh, Oasis

**Rupert Howes**, CEO, Marine Stewardship Council

**Jon Huggett**, Director, The Third Foundation

**Rogan Hume**, Enterprise & Partnerships Development, Brisbane City Council

**Bim Hundal**, Chairman & Partner, Lions Head Global Partners

**Yvonne Hunt**, Chief Philanthropy Officer, Legacy Venture

**Kigge Hvid**, CEO, INDEX: Design to Improve Life

## I

**Alberto Ibarguen**, President/CEO, Knight Foundation

**Hiroyasu Ichikawa**, Founder / President, Socialcompany, Inc.

**Shahzad Iqbal**, Manager, Finance, Kashf Foundation

**Albert Iten**, Managing Director Finance, Wille Finance AG

**Joichi Ito**, CEO, Creative Commons

## J

**Tim Jackson**, Founder and Partner, Tech Capital Partners

**Ahsan Jamil**, Chief Executive Officer, The Aman Foundation

**Richard Jefferson**, CEO, Cambia

**Michael Jenkins**, President and CEO, Forest Trends

## NAME, JOB TITLE, ORGANISATION

**Pari Jhaveri**, Executive Director, Third Sector Partners

**Juan Carlos Jintiaich**, Area Coordinator of International Cooper, COICA

**Jamie Jones**, Director, Levy Social Entrepreneurship Lab

**Roxanne Joyal**, Co-Founder, Me to We

## K

**Tom Kabuga**, Analyst, Aros Capital Partners

**Nik Kafka**, CEO & Founder, Teach A Man To Fish

**Joanne Kagle**, Member, Legacy Venture

**Tony Kalm**, Development Director, One Acre Fund

**Gail Kaneb**, Board Chair, Tostan

**Namrita Kapur**, Director of Strategy, Corp Partnerships, Environmental Defense Fund

**Lakshmi Karan**, Director, Impact Assessment & Learning, Skoll Foundation

**Brian Kariger**, Chairman, Beneventures Foundation, Inc.

**Oliver Karius**, Partner, LGT Venture Philanthropy

**Antti Karjalainen**, Programme Director, The Finnish Institute in London

**Jordan Kassalow**, Founder & CEO, VisionSpring

**Muswagha Katya**, Oxford MBA Student Skoll Associate, Saïd Business School

**Randall Kempner**, Executive Director, Aspen Network for Development Entrepreneurs

**Peter Kenyon**, Operations Director, International Bridges to Justice

**Cheryl Kernot**, Director of Social Business, Centre for Social Impact

**Nigel Kershaw**, Chair / CEO, The Big Issue / Big Issue Invest

**Pallavi Keshri**, Founder, Eyaas

**Nadine Kettaneh**, Founder, Nasihat Timsah

**Nader Khateeb**, Palestinian Director, EcoPeace/Friends of the Earth Middle East

**Lauren Kickham**, Skoll Centre Associate Fellow, Skoll Centre for Social Entrepreneurship

**Craig Kielburger**, Chair & Founder, Free The Children

**Marc Kielburger**, Co-Founder, Free The Children

**Tom Kiely**, McKinsey Publishing, McKinsey & Company

**Jesse Kirkey**, MBA Student, Saïd Business School

**Courtney Klein**, Chief Executive Officer, New Global Citizens

**Ivo Knoepfel**, Managing Director, onValues Ltd.

**Samara Koffler**, Executive Assistant, Jeff Skoll Group

**John Kohler**, Executive Fellow, GSBI, Santa Clara University

**Wendy Kopp**, CEO & Co-Founder, Teach For All

**Johann Koss**, President & CEO, Right to Play

**Paula Kravitz**, Marketing Director, Skoll Foundation

**Petra Kroon**, Creative director, SSO

**Jonathan Kua**, Director, New Businesses, Economic Development Board

## NAME, JOB TITLE, ORGANISATION

Heidi Kühn, Founder & CEO, Roots of Peace

Gary Kuhn, Executive Director, Roots of Peace

Sujeet Kumar, CEO, Kalinga Kusum Foundation

Mari Kuraishi, President, Global Giving

Dee Kyne, Business Director, Pathfinder Healthcare Developments

Rachel Kyte, Vice President, International Finance Corporation

## L

Dhruv Lakra, Alumni

Daan Laméris, Programme manager, Doen Foundation

Lily Lapenna, Founder and CEO, MyBnk

Iris Lapinski, Director UK Pilots, CDI

Jessamyn Lau, Program Leader, Peery Foundation

Jessica Lax, Entrepreneur, Skoll Scholar

Philip Leaf, Professor, Johns Hopkins University

Jennifer Lee, Philanthropist Sidekick, Jennifer Lee and Craig Silverstein

Jeremy Leggett, Chairman, SolarAid

David Lehr, Senior Advisor, Social Innovations, Mercy Corps

Jeff Leifer, Founder and Executive Director, InterChange Summit/Professional Pugwash

Katinka Leiner, Director Social Entrepreneurs, Ferd

Annie Lennox, Founder, SING

Leonardo Letelier, CEO, Sitawi

Stephanie Leung, UK Director, Half the Sky

Wendy Levy, Director of Creative Programming, Bay Area Video Coalition

Jonathan Lewis, Founder/CEO, Opportunity Collaboration

Michael Lewkowitz, Founder, ChangeMedium

Samjin Lim, Executive Memeber, Policy Division, Better Social Enterprise Network

Elizabeth Lindsey, Explorer/Fellow, National Geographic

Judith Lingeman, Deputy Head of Charities, Dutch Postcode Lottery

Alejandro Litovsky, Director, Pathways to Scale Program, Volans

Rick Little, CEO, Silatech

Elizabeth Littlefield, Director, CGAP

Lynn Lohr, Vice President of Resource Development, Transfair USA

Charmian Love, CEO, Volans

Kenny Low, Managing Director, O School

Bruce Lowry, Communications Director, Skoll Foundation

Mindy Lubber, President, Ceres

Daniel Lubetzky, President, PeaceWorks Foundation

Nancy Lublin, CEO, DoSomething.org

## NAME, JOB TITLE, ORGANISATION

Jan Luebbering, Founder/Director, streetfootballworld South Africa

Karin Lui, MBA Candidate 2009-10, Said Business School

Geoff Lye, Executive Chairman, SustainAbility

Mark Lynas, Climate Writer, University of Oxford

John Lyndon, Executive Director, OneVoice Europe

## M

Slavka Macakova, Director, ETP - Center for Sustainable Development

Lisa Maccallum, Managing Director, Nike Foundation, Nike Inc.

Sitaramachandra Machiraju, Alumni Skollar, International Development Consultant

Joe Madiath, Founder & Executive Director, Gram Vikas

Liliana Madrigal, VP, Programs, Amazon Conservation Team

Josh Mailman, Managing Director, Serious Change Investments

Nicky Major, Director of Corporate Responsibility, Ernst & Young

Patrick Maloney, Program Director, Lemelson Foundation

Bill Mancini, JS Security, Skoll Foundation

Noah Manduke, Chief Strategy Officer, Jeff Skoll Group

John Marks, President & Founder, Search for Common Ground

Simon Marks, Associate Executive Producer, PBS NewsHour

Sebastien Marot, International Coordinator, Friends-International

Maximilian Martin, Chief Strategist, IJ Partners

Roger Martin, Dean, Rothman School of Management, University of Toronto

Cristina Martinez, Founder, NaturaGourmet

Francesca Martonffy, Director, Global Changemakers

Wendy Marzetta, Assistant to the President, Skoll Foundation

Isabella Matambanadzo, Chief Executive Officer, The Zimbabwe Trust

Marc Mathieu, Founder, BeDo

Sarah Maxwell, Assistant, Skoll Global Threats Fund

Sean Mayberry, Chief Operating Officer, VisionSpring

Colin Mayer, Peter Moores Dean, Professor of Management Studies, Said Business School

John McCall MacBain, Founder & Director, McCall MacBain Foundation

Tara McConaghy, Senior Advisor, GOOD Worldwide/Goldhirsh Foundation

Ntongi McFadyen, Alumni Scholar, Independent Consultant

Sarah McGeehan, Head of Social Finance, NESTA

Angela McLean, Professor of Mathematical Biology, All Souls College, University of Oxford

Douglas McMeekin, Executive Director, Yachana Foundation

Bridget McNamer, Senior Program Officer, Skoll Foundation

Munqeth Mehyar, Jordanian Director, EcoPeace

# M-S DELEGATES

## NAME, JOB TITLE, ORGANISATION

<b>Eric Meissner</b> , MBA Candidate, Saïd Business School
<b>Molly Melching</b> , Executive Director, Tostan
<b>Jeff Mendelsohn</b> , Founder & CEO, New Leaf Paper
<b>Katie Merrick</b> , Investment Analyst, Skoll Foundation
<b>Cara Mertes</b> , Director, Sundance Institute Documentary Film Program
<b>Michael Messenger</b> , Vice President, World Vision Canada
<b>Forrest Metz</b> , Managing Director, Dev Equity
<b>Monty Metzger</b> , CEO & Founder, Ahead of Time GmbH
<b>Vive Mgudwa</b> , Site Coordinator, mothers2mothers
<b>Kelly Michel</b> , Founder / President, Artemisia
<b>Ellen Miller</b> , Co-Founder and Executive Director, Sunlight Foundation
<b>Lindsay Miller</b> , Programming Lead, Skoll World Forum
<b>Natalie Miller</b> , Student, Saïd Business School
<b>Cheryl Mills</b> , Former Associate Deputy Administrator, US Small Business Administration
<b>Stephen Mills</b> , Director, International Programs, Sierra Club
<b>Alisha Miranda</b> , Group Sustainability, Standard Chartered Bank
<b>Dr. Emmanuel S. Miri</b> , Country Representative, The Carter Center
<b>Pat Mitchell</b> , President & CEO, The Paley Center For Media
<b>Julia Moffett</b> , Trustee, Burberry Foundation; African Media Initiative
<b>Farah Mohamed</b> , President, The Belinda Stronach Foundation
<b>Sharifah Mohamed</b> , Manager, Lien Centre for Social Innovation
<b>Abhimanyu Mohanty</b> , Junior Manager, GRAM VIKAS
<b>Read Montague</b> , Professor, Baylor College of Medicine
<b>Nick Moon</b> , Founder & Managing Director, Africa, KickStart
<b>Jesse Moore</b> , Alumni Skollar (06-07), Signal Point Partners
<b>Marah Moore</b> , Director, i2i Institute
<b>Israel Moreno</b> , Director, CEMEX Patrimonio Hoy
<b>Steve Morgan</b> , Deputy Director, ECI, Oxford
<b>Raja Moubarak</b> , Managing Director, Winquest
<b>Natalia Mouhape</b> , Investment Executive, Bamboo Finance
<b>Dorje Mundle</b> , Head of Corporate Citizenship Mgt, Novartis
<b>David Murphy</b> , President and CEO, Better World Books
<b>Geoffrey Murphy</b> , Director, Econ Development Program, Wellspring Advisors

## N

<b>Ashwin Naik</b> , Founder/CEO, Vaatsalya
<b>Fayeeza Naqvi</b> , Sponsor, Aman Foundation
<b>Ashwini Narayanan</b> , General Manager, MicroPlace/eBay
<b>Kannan Narayanaswamy</b> , Chief Architect, Innovation Fund, Villgro
<b>Reinder Nauta</b> , CEO, CareCross Health

## NAME, JOB TITLE, ORGANISATION

<b>Michael Naylor</b> , Partner, Forrester Partners
<b>Francis Njuakom Nchii</b> , Director, CDVTA Cameroon
<b>Andrew Neale</b> , President & CEO, Canada Gold Corporation
<b>Vincent Neate</b> , Partner, KPMG LLP
<b>Liz Nelson</b> , Development Manager, Skoll Centre
<b>Alex Nicholls</b> , Lecturer in Social Entrepreneurship, University of Oxford
<b>Faith Nkala</b> , Deputy Executive Director, Camfed Zimbabwe
<b>Aric Noboa</b> , Executive Producer, Discovery Channel Global Education Partnership
<b>Eric Nonacs</b> , VP, Alliances & Partnerships, Skoll Global Threats Fund
<b>Ndidi Nwuneli</b> , Director, African Alliance for Capital Expansion

## O

<b>Nick O'Donohoe</b> , Global Head of Research, JP Morgan
<b>Kip Oebanda</b> , Resource Development Specialist, Visayan Forum Foundation, Inc.
<b>Stephane Oertel</b> , Associate Director, World Economic Forum
<b>Gary Officer</b> , President/CEO, Rebuilding Together, Inc
<b>Felix Oldenburg</b> , Director Germany, Ashoka
<b>Charles O'Malley</b> , Managing Director, Myoo Create
<b>Rebecca Onie</b> , Co-Founder & CEO, Project HEALTH
<b>Pieter Oostlander</b> , Director, Rosmersholm Professional Services
<b>Jennie Organ</b> , Communications Manager, BioRegional
<b>Oscar Ortega</b> , General Director, Fundación Amancio Ortega
<b>Sally Osberg</b> , President and CEO, Skoll Foundation
<b>Olga Osipenko</b> , Program Manager, UNESCO
<b>Maurice Ostro</b> , Chairman, Fayre Share Foundation
<b>Edwin Ou</b> , Program Officer, Skoll Foundation

## P

<b>Maria Padget</b> , Associate, Ethicore
<b>Marcello Palazzi BSc MSc MBA</b> , Founder & President, Progressio Foundation, Netherlands
<b>Agnes Pareyio</b> , Project Coordinator, Tasaru Ntomonok Initiative
<b>Wonsoon Park</b> , The Executive Director, The Hope Institute
<b>Laura Parkin</b> , CEO, National Entrepreneurship Network (NEN)
<b>Mayur Patel</b> , Director Strategic Assessment & Asst to President, John S. and James L. Knight Foundation
<b>Alan Patricof</b> , Board Member, Millennium Challenge Corporation
<b>Sonja Patscheke</b> , Consultant, FSG Social Impact Advisors
<b>Bob Pattillo</b> , Founder, Gray Ghost Ventures
<b>Seema Paul</b> , CEO, Shakti Sustainable Energy Foundation
<b>Muthuvelan Pazhanivelan</b> , Student, Saïd Business School



## NAME, JOB TITLE, ORGANISATION

<b>Kristine Pearson</b> , CEO, Freeplay Foundation
<b>Dave Peery</b> , Executive Director, Peery Foundation
<b>Liesbet Peeters</b> , Managing Director, Lapiduz Advisory Services
<b>Chris Pelley</b> , CEO, Managing Director, CIMCO / ACG
<b>Meghan Pelley</b> , Associate, Morgan Stanley
<b>Aaron Pereira</b> , Co-Founder, CanadaHelps, Vartana
<b>James Perry</b> , Director, Panahpur
<b>Gayle Peterson</b> , Senior Partner, Headwaters Group
<b>Rob Pettit</b> , Skoll Scholar alumni, Jacana
<b>Kieu Oanh Pham</b> , Director, Centre for Social Initiatives Promotion
<b>James Phills</b> , Professor, Center for Social Innovation, Stanford University
<b>Dr. Felix Phiri</b> , Director of Planning and Information, Ministry of Education, Zambia
<b>Tony Pigott</b> , Co-Founder, Brandaidproject & JWT
<b>Drummond Pike</b> , CEO, Tides Foundation
<b>Preston Pinkett</b> , Vice President, Prudential Financial
<b>Joan Platt</b> , President and Founder, Joan and Lewis Platt Foundation
<b>Mark Plotkin</b> , President, Amazon Conservation Team
<b>George Polk</b> , Founder & CEO, The Catalyst Project
<b>Ben Powell</b> , Founder, Managing Partner, Agora Partnerships
<b>Simon Preston</b> , Chairman of the International Board, YPO

## Q

<b>QingQing Qiu</b> , Director of Social Innovation Initiative, China Social Entrepreneur Foundation
<b>Mike Quinn</b> , General Manager, Mobile Transactions Zambia
<b>Waya Quiviger</b> , Director of Special Projects, IE Business School

## R

<b>Dr. Maria Rosaline Nindita Radyati</b> , Director, Trisakti University-CECT
<b>Sadeesh Raghavan</b> , Ambassador, Acumen
<b>Rafael Ramirez</b> , James Martin Senior Research Fellow in Futures, University of Oxford
<b>Paul Rankin</b> , President & Co-Founder, Living Cultural Storybases (LCS)
<b>Saif-AI Rashid</b> , Program Manager, Care Bangladesh
<b>Eric Rassman</b> , Deputy Director, Ikatu International
<b>Farshad Rastegar</b> , President and CEO, Relief International
<b>Wendy Read</b> , Founder/CEO, The Childrens Project
<b>Edward Rees</b> , Senior Advisor, Peace Divident Trust
<b>Melissa Regan</b> , Founder, NoDumbQuestions.org
<b>Ted Regan</b> , President, Kaleidoscope, LLC
<b>Emily Reid</b> , Partner, International Lawyers

## NAME, JOB TITLE, ORGANISATION

<b>Paul Rice</b> , President & CEO, Transfair USA
<b>Andreas Marcus Rickert</b> , CEO, PHINEO - Platform for Social Investors
<b>Sue Riddlestone</b> , Executive Director & Co-Founder, BioRegional Development Group
<b>Peter Riggs</b> , Program Officer, Ford Foundation
<b>Elizabeth Riker</b> , Partner, New Profit Inc.
<b>Mike Risman</b> , Chairman, The Venture Partnership Foundation
<b>Mary Roach</b> , MBA Student, Saïd Business School
<b>Callum Roberts</b> , Professor, University of York
<b>Susan Robinson</b> , Trustee, The Story Museum
<b>Anthony Rodgers</b> , Professor of Global Health, The George Institute
<b>Harold Rosen</b> , Executive Director, Grassroots Business Fund
<b>Antony Ross</b> , Director, Bridges Ventures
<b>David Rothschild</b> , Senior Program Officer, Skoll Foundation
<b>Aruna Roy</b> , Activist, Mazdoor Kisan Shakti Sangathan (MKSS)
<b>Bunker Roy</b> , Director, Barefoot College
<b>Reeta Roy</b> , President/CEO, The Mastercard Foundation
<b>Reihem Roy</b> , Fund Management, Villgro Innovations Foundation
<b>Slava Rubin</b> , Founder, IndieGoGo
<b>Jasmin Ruckli</b> , General Manager Operations, Wille Finance AG
<b>Albina Ruiz Rios</b> , Executive Director, Ciudad Saludable
<b>Max Rutten</b> , Managing Director, ADA Investment Management
<b>Ambrosius Ruwi Ruwindrijarto</b> , President, Telapak

## S

<b>Denielle Sachs</b> , Global Communications Manager, McKinsey & Company
<b>Amitabha Sadangi</b> , CEO, International Development Enterprises - India
<b>Puchka Sahay Drenzo</b> , MD, Amariann Ltd.
<b>Grace Sai</b> , Skollar, Saïd Business School
<b>Soraya Salti</b> , Senior Vice President MENA, INJAZ al-Arab, JA Worldwide
<b>Dipender Saluja</b> , Managing Director, Capricorn Investment Group, LLC
<b>Filipe Santos</b> , Academic Director - Social Entrepreneurship, INSEAD
<b>Luis Santos</b> , Founder, Mentoring Kids - Changing Lives
<b>Jason Saul</b> , CEO, Mission Measurement
<b>Vicki Saunders</b> , CEO, Zazengo
<b>Nathalie Sauvanet</b> , Head of Philanthropy, BNP Paribas Wealth Management
<b>Susan Sayers</b> , Vice President, Institutional Partnerships, Partners in Health
<b>Christian Schattenmann</b> , Director Finance, Blue Orchard Investments
<b>Christoph Schmockler</b> , CEO, UBS Optimus Foundation
<b>Mirjam Schoening</b> , Senior Director and Head, Schwab Foundation for Social Entrepreneurship

# S-Z DELEGATES

## NAME, JOB TITLE, ORGANISATION

<b>J.B. Schramm</b> , Founder & CEO, College Summit
<b>Margriet Schreuders</b> , Coordinator Allocations, Dutch Postcode Lottery
<b>Eric Schwarz</b> , Co-Founder & CEO, Citizen Schools
<b>Barbel Schwertfeger</b> , Journalist/Managing Director
<b>Ryan Scott</b> , CEO, Causecast
<b>Alex Seaborne</b> , Series Producer, Rockhopper
<b>Jess Search</b> , CEO, Channel 4 BRITDOC Foundation
<b>Shruti Sehra</b> , Manager, Portfolio Team, New Profit Inc.
<b>Audrey Selian</b> , Director, Artha Initiative, Rianta Capital
<b>Dolores R. Sewchok</b> , Vice President, National Center for Arts and Technology
<b>Minouche Shafik</b> , Permanent Secretary, DFID
<b>Premal Shah</b> , President, Kiva
<b>Darya Shaikh</b> , Executive Director/COO, Peaceworks Foundation/OneVoice Movement
<b>Peter Sherratt</b> , Advisory Council, Said Business School
<b>Jennifer Shilling Stein</b> , Executive Director, Draper Richards Foundation
<b>John Sicheloff</b> , CEO, JumpStart Productions
<b>Tony Siddall</b> , MBA Student, Said Business School
<b>Jack Sim</b> , Founder, World Toilet Organization
<b>Bright Simons</b> , Coordinator, mPedigree Network
<b>Shankar Singh</b> , Activist, Mazdoor Kisan Shakti Sangathan (MKSS)
<b>Tom Singh</b> , Advisor, Rianta Capital Limited
<b>Mai Siriphongphanh</b> , Chief People Officer/COO, Digital Divide Data
<b>Anya Sitaram</b> , Company Director/Exec Producer, Rockhopper
<b>Jeff Skoll</b> , Founder and Chairman, Skoll Foundation, Participant Media, and Skoll Global Threats Fund
<b>Gary Slutkin</b> , Executive Director, CeaseFire
<b>Amy Smart</b> , Actress and Environmentalist, EMA and Heal The Bay
<b>Tim Smit</b> , Chief Executive & Co-Founder, Eden Project
<b>Nina Smith</b> , Executive Director, RUGMARK
<b>Shawn Smith</b> , Skoll Scholar, Said Business School
<b>Mark Smolinski</b> , Director, Global Health, Google.org
<b>Birgitte Hagemann Snabe</b> , Director, The Mary Foundation
<b>Thorkil Sonne</b> , Founder, Specialist People Foundation
<b>Suzi Sosa</b> , Chief of Staff, MPOWER Labs
<b>Janice Sousa</b> , Executive Director, Me to We & Free The Children
<b>Nick Southern</b> , Country Director, CARE Bangladesh
<b>Carlos Souza Jr</b> , Senior Researcher, Amazon
<b>Laurie Spengler</b> , President & CEO, ShoreBank International Ltd.
<b>Greg Spradlin</b> , Vice-President, Hope Equity
<b>Keith Stamm</b> , COO,
<b>Ingrid Stange</b> , Head of Family Office and Philanthropy, Formuesforvaltning AS

## NAME, JOB TITLE, ORGANISATION

<b>Kevin Starr</b> , Director, Mulago Foundation & Rainer Fellows
<b>Richard Steele</b> , Partner, Bridgespan
<b>Robert Stephenson</b> , Director General, Blastbeat Education UK
<b>Anne Stetson</b> , Co-Founder, Africa Healthcare Fund
<b>Keely Stevenson</b> , Bamboo Finance, Investment Executive
<b>David Stone</b> , Director of Information, Amazon Conservation Team
<b>Miriam Stone</b> , VP of Business Development, VisionSpring
<b>Dorothy Stoneman</b> , Founder & President, YouthBuild USA
<b>Henrik Storm Dyrssen</b> , Consultant, 180 Degrees Consulting
<b>Jacqueline Strasser</b> , Deputy Chief of Staff and Acting VP & CFO, Overseas Private Investment Corporation (OPIC)
<b>Ms. Mitchell L. Strauss</b> , Special Advisor SRI Finance, Overseas Private Investment Corporation
<b>Bill Strickland</b> , President & CEO, Manchester Bidwell Corporation
<b>Marc Strobel</b> , Observer to Board of Oasis, Oasis Fund
<b>Ray Suarez</b> , Senior Correspondent, PBS Newshour
<b>Suresh Subramanian</b> , COO, IDEI
<b>Farell Sutantio</b> , Director, PT Cisarua Mountain Dairy
<b>Luis Szaran</b> , Director, Sonidos de la Tierra
<b>Tina Tan-Zane</b> , Marketing Assistant, Skoll Foundation
<b>Mark Tauber</b> , S.V.P. & Publisher, HarperOne, HarperCollins Publishers
<b>Candace Taylor</b> , Director of Sustainability, Walmart
<b>Mee Hong Teo</b> , Executive Director, Social Enterprise Association
<b>David Tepper</b> , Executive management, Forest Trends
<b>Dorothee ter Kulve</b> , Chairman, Friendship International
<b>Mathias Terheggen</b> , Global Head Philanthropy Services, UBS
<b>Geetha Tharmaratnam</b> , Principal, Investments & ESG, Aureos Capital
<b>Greta Thomas</b> , CEO & Consultant, INNOVAID & (RED)
<b>Caroline Tidemand</b> , Analyst, Formuesforvaltning AS
<b>Andrea Tobias</b> , Managing Director, Aquila Consulting LLC
<b>David Tolbert</b> , President, International Center for Transitional Justice
<b>David Torres</b> , Director, External Affairs, mothers2mothers
<b>Ilse Treurnicht</b> , CEO, MaRS Discovery District, Toronto
<b>Molly Tschang</b> , Managing Director, International Programs, Cisco
<b>Karen Tse</b> , Founder & CEO, International Bridges to Justice
<b>Silverius Oscar Unggul</b> , Vice President, Telapak

## T

## U

## NAME, JOB TITLE, ORGANISATION

## V

<b>Laura Vais</b> , Vice President, Marketing, Skoll Foundation
<b>Bina Valsangkar</b> , MD,MPH, Founder/Director, The Quito Project
<b>Henk van den Breemen</b> , Chairman of the Advisory Board, Noaber Foundation
<b>Saskia van der Mast</b> , Investment Manager, D.O.B Foundation
<b>Carrie van Heyst</b> , CEO, Van Heyst Group, Inc.
<b>Mabel van Oranje</b> , CEO, The Elders
<b>Minke van Rees</b> , Teammanager, DOEN Foundation
<b>Paul Van Zyl</b> , Co-Founder, International Center for Transitional Justice
<b>Thomas Vellacott</b> , Programme Director, WWF Switzerland
<b>Marc Ventresca</b> , Lecturer in Management Studies, SBS - RG
<b>Adalberto Verissimo</b> , Senior Research and Co-Founder, Imazon
<b>Lindsay Vick</b> , Administrative Assistant, Skoll Global Threats Fund
<b>Susana Vidal</b> , Founder, Invest Peru
<b>Daniel Viederman</b> , Executive Director, Verite
<b>Mary Jo Viederman</b> , Charter 21
<b>Monique Villa</b> , CEO, Thomson Reuters Foundation
<b>Rebeca Villalobos</b> , Presidenta Ejecutiva, Asembis
<b>Rodrigo Villar</b> , Managing Director, New Ventures Mexico
<b>Estela Villarreal</b> , Founder, Unidos Somos Iguales
<b>Mechai Viravaidya</b> , Chairman, Population and Community Development Association
<b>Mauricio Vivero</b> , Executive Director, Seattle International Foundation
<b>Leàanne Viviers</b> , MBA Student, Said Business School
<b>Francisco Vizcaya</b> , CEO, Finae, SAPI
<b>Lara Vogel</b> , Student, Said Business School
<b>Alberto Vollmer</b> , Chairman & CEO, CA Ron Santa Teresa
<b>Dr. Martín Von Hildebrand</b> , Director, Fundación Gaia Amazonas
<b>Herta von Stiegel</b> , Executive Chairman, Ariya Capital

## W

<b>Mathis Wackernagel</b> , President, Global Footprint Network
<b>Hans Wackwitz</b> , Managing Partner, Partners in Equity
<b>Linda Walker</b> , Managing Director, Walker von Graffenried Asset Management
<b>Liz Wallace Ellers</b> , Founder & Managing Partner, The Globalislocal Fund
<b>Lauren Walters</b> , Chairman, GiveBars
<b>Christoph Warrack</b> , CEO, Open Film Club
<b>Aviv Wasserman</b> , Founder and Director, Lod Community Foundation
<b>Ruth Wasserman Lande</b> , Co-Director, Lod Community Foundation
<b>Norman Watson</b> , Executive Director, UBS AG

## NAME, JOB TITLE, ORGANISATION

<b>Richard Webb</b> , President and Founder, ProWorld Service Corps
<b>Bart Weetjens</b> , Founder, APOPO / HeroRAT
<b>James Weinberg</b> , Founder & CEO, Commongood Careers
<b>Diana Wells</b> , President, Ashoka
<b>Chris West</b> , Director, Shell Foundation
<b>Gary White</b> , Executive Director, Water.org
<b>Nathaniel Whittemore</b> , Founder, Assetmap
<b>Anna Wieslander</b> , Head of Charity and Comm, Novamedia Svenska Postkodlotteriet AB
<b>Allen Wilcox</b> , President, Village Reach
<b>Jurie Willemse</b> , Managing Director, GroFin
<b>Claire Williams</b> , Twitter CSR, SBS/Twitter
<b>Jay Williams PhD</b> , CEO President, Health and Wellness
<b>Jan-Olaf Willums</b> , Chairman, Inspire Foundation for Business and Soc.
<b>Alastair Wilson</b> , Chief Executive, School for Social Entrepreneurs
<b>Christine Wilson</b> , Adviser, Social Development, British Council
<b>Bettina Windau</b> , Director, Bertelsmann Stiftung
<b>Philip Wise</b> , Vice President-Operations, Carter Center
<b>Lisa Witter</b> , COO, Fenton Communications
<b>Dorothy Wolf</b> , Special Projects, Fundacion Paraguaya
<b>Jonathon Wolfe</b> , Director, Midnight Basketball Australia
<b>Nathan Wolfe</b> , CEO and Founder, Global Viral Forecasting Initiative
<b>Chris Wolz</b> , President/CEO, Forum One Communications
<b>John Wood</b> , Founder & Executive Chairman, Room to Read

## Y

<b>Sakena Yacoobi</b> , Executive Director, Afghan Institute of Learning
<b>Ion Yadigaroglu</b> , Managing Principal, Co-founder, Capricorn Investment Group, LLC
<b>Liu Yan</b> , CEO & Co-Founder, Xindanwei
<b>John Ydstie</b> , Economic Correspondent, National Public Radio, USA
<b>Matthew York</b> , Executive Director, One Media Player per Teacher
<b>Andrew Youn</b> , Founder, One Acre Fund
<b>Bill Young</b> , President, Social Capital Partners
<b>Caroline Young</b> , Skoll Associate Fellow, Said Business School
<b>Yiu-Kai Terence Yuen</b> , Research Director, Social Ventures Hong Kong

## Z

<b>Ana Zacapa</b> , Program Officer, Skoll Foundation
<b>Yasmina Zaidman</b> , Director of Communications, Acumen Fund

# NOTES

# THANK YOU

## A SUCCESSFUL FORUM

### SKOLL WORLD FORUM PROGRAMME AND PRODUCTION TEAM

#### Skoll Foundation

Sally Osberg, Executive Committee  
 Paula Kravitz, Director and Curator  
 Kelly Creeden, Producer  
 Phil Collis  
 Dan Crisafulli  
 Victor d'Allant  
 Lorna Donaldson  
 Jill Finlayson  
 Sandy Hertz  
 Lakshmi Karan  
 Bruce Lowry  
 Bridget McNamer  
 Edwin Ou  
 David Rothschild  
 Kimberly Tripp  
 Laura Vais  
 Tina Tan Zane

#### Skoll Centre

Pamela Hartigan, Director  
 Alexis Ettinger  
 Pippa Hitchens  
 Liz Nelson

#### Producing Partners

A Caspian Production - Linda Champagne, Nicole Crncich, Michelle Lasnier Brinson, Heather Mason, Jason Sanders, Cameron Sawyer, Craig Whyte  
 Fred Davis and Saïd Business School Technical Team  
 Ethicore Ltd - Rachael Clay and Maria Padget  
 Lindsay Miller, Programme Coordinator  
 Maire McCarthy and the Stewarding Team  
 Saïd Business School Students  
 Skoll Associate Bloggers  
 Skoll Scholars

Programme and website design by [www.oneltd.co.uk](http://www.oneltd.co.uk)

### ENVIRONMENTAL FOOTPRINT

We have taken the following steps to make the forum a sustainable event:

- Reduced the volume of delegate materials, while making them more user-friendly, and using sustainable materials.
- Provided fair trade lunch items with recycled paper bags and napkins.
- Calculated the carbon emissions for our event and donated this sum to the Clean Star Trust, Plant a Biofuel Tree Campaign.





## FRIDAY

### 1400-1530

- COMPELLING ACTION: Social change media in the age of information overload
- LOCAL TALENT ON A GLOBAL SCALE: HR strategies for sustainability
- OCEANS IN PERIL: Catalysing international collaboration
- AID AGENCIES AND SOCIAL ENTREPRENEURS: Natural allies, new bridges
- WHEN DISASTER STRIKES: Social entrepreneurs managing through crisis
- CONNECT AND COLLABORATE

### 1730-1900

- Skoll Awards

### 1900-2130

- Awards Reception

### 2200-2330

- Film Screening: OCEANS

### 0900-1030

- CLIMATE CHANGE POST-COPENHAGEN: Collaborating from the ground up
- DONOR COLLABORATION FOR ISSUE LEVEL IMPACT
- GOVERNMENTS AND SOCIAL ENTREPRENEURS: Partnership versus subcontracting
- NEXT GENERATION SOCIAL MEDIA FOR GREATER PROGRAMMATIC IMPACT
- TAPPING INTO SOCIAL FINANCE FOR GROWTH: A clinic for practitioners
- CONNECT AND COLLABORATE

### 1030-1100

Break

### 1100-1230

- CANARY IN THE COAL MINE: H1N1 and global threat preparedness in the 21st century
- CLIMATE CHANGE, SOCIETAL DEMAND AND FOOD SECURITY: Social entrepreneurs at the intersection
- COLLABORATIVE LEADERSHIP: A practical toolkit
- REIMAGINING NETWORKS FOR INNOVATION AND IMPACT
- THE COLOURS OF MONEY: Social financiers collaborating for impact
- CONNECT AND COLLABORATE

### 1230-1400

- Networking Lunch

### 1430-1600

- Closing Plenary

**SAVE THE DATE**  
**30 MARCH TO 1 APRIL**  
**2011**

**SKOLL WORLD FORUM**  
**ON SOCIAL ENTREPRENEURSHIP**